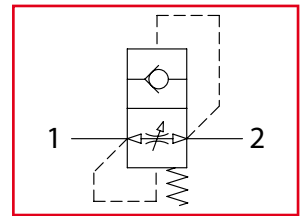


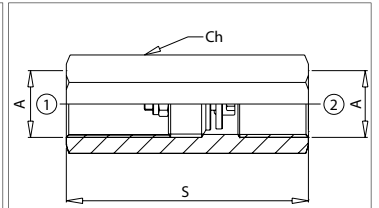
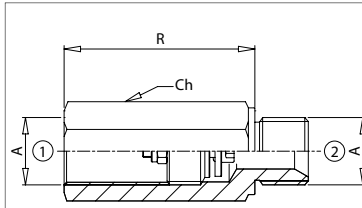


VUBA

Valvole Unidirezionali Registrabili
Adjustable check valves



Dati tecnici Technical data	
Viscosità fluido Fluid viscosity	10-500 mm ² /s 45 to 2000 ssu (6 to 420 cSt)
Classe di contaminazione Filtration	ISO code 16/13 SAE class 4 or better
Temperatura fluido Fluid temperature	-20°C +80°C -4°F +176°F
Temperatura ambiente Ambient temperature	-20°C +50°C -4°F +122°F



Colonnette / Housings M/F

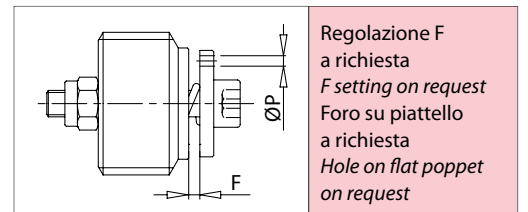
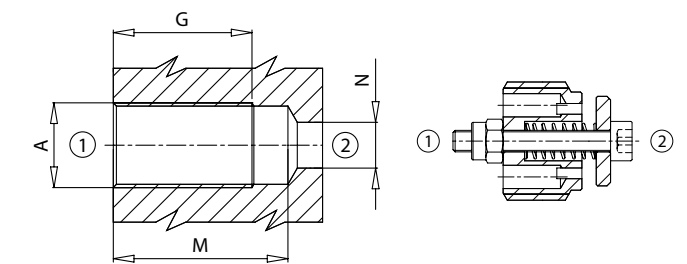
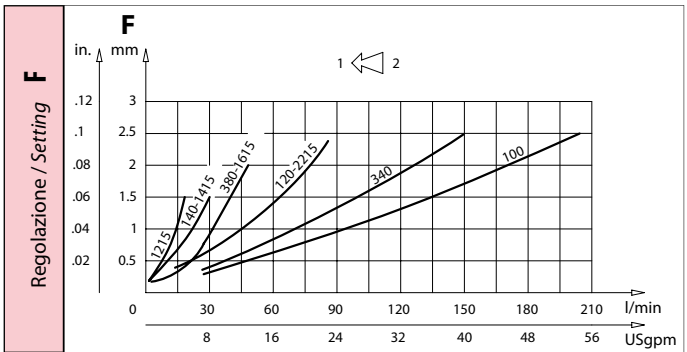
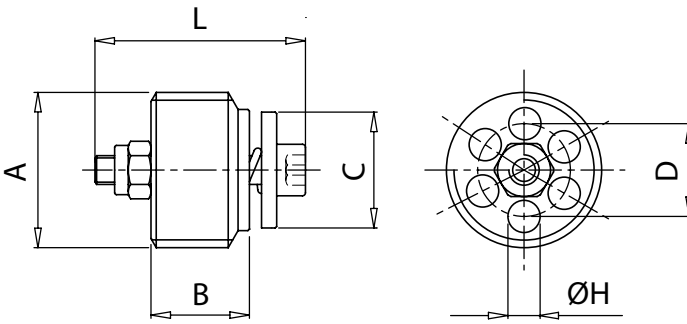
Colonnette / Housings F/F

Dimensioni / Dimensions

Dimensioni / Dimensions

Codice Code	A	R	Peso Weight Kg / lb
61100087	BSPP 1/4	39 (1.53)	0,07 (0.16)
61100088	BSPP 3/8	45 (1.77)	0,09 (0.20)
61100089	BSPP 1/2	52 (2.05)	0,15 (0.33)
61100090	BSPP 3/4	61 (2.40)	0,23 (0.50)

Codice Code	A	R	Peso Weight Kg / lb
61100092	BSPP 1/4	48 (1.89)	0,07 (0.16)
61100093	BSPP 3/8	54 (2.13)	0,09 (0.20)
61100094	BSPP 1/2	73 (2.87)	0,14 (0.30)
61100095	BSPP 3/4	74 (2.91)	0,22 (0.48)



Regolazione F a richiesta
F setting on request
Foro su piattello a richiesta
Hole on flat poppet on request

Chiave / Tool		
Dimensioni / Dimensions		
Codice Code	A	Peso Weight Kg / lb
61700001	VUBA 140	0,12 (0.27)
61700002	VUBA 380	0,13 (0.29)
61700003	VUBA 120	0,15 (0.33)
61700004	VUBA 340	0,18 (0.40)

Codice ordinazione Ordering code			
VUBA - X - Y - K			
X	Dimensione / Size	Y	Regolazione / Setting
140	BSPP 1/4	F _{0,7}	Esempio: regolazione 0,7 mm Example: setting 0.7 mm F0,7
380	BSPP 3/8		Omettere se non richiesto Omit if not required
120	BSPP 1/2		
340	BSPP 3/4	K	Foro sul piattello Hole on flat poppet
100	BSPP 1		P _{1,5}
1215	M12x1.5	Omettere se non richiesto Omit if not required	
1415	M14x1.5		
1615	M16x1.5		
2215	M22x1.5		

Caratteristiche tecniche Technical performances

Codice Code	A	Portata Max Max flow l/min - USgpm	Pressione Max Max pressure bar/PSI	B	C	D	G	H	L	M	N	Coppia di serraggio Tightening torque Nm / lbf ft	Peso approssimativo Approx weight Kg / lb
VUBA 140	BSPP 1/4	25 (6.5)	350 (5000)	8,2 (0.32)	10,4 (0.41)	8 (0.31)	25 (0.98)	2,5 (0.10)	19 (0.75)	35 (1.38)	7 (0.28)	2 (1.5)	0,007 (0.016)
VUBA 380	BSPP 3/8	50 (13)		11 (0.43)	12,7 (0.50)	10 (0.39)	30 (1.18)	3,25 (0.13)	23 (0.90)	41 (1.61)	9,5 (0.37)	3 (2.5)	0,013 (0.029)
VUBA 120	BSPP 1/2	80 (21)		13 (0.51)	15 (0.59)	11,5 (0.45)	33 (1.30)	4 (0.16)	29 (1.14)	46 (1.81)	12 (0.47)	4 (3)	0,024 (0.053)
VUBA 340	BSPP 3/4	150 (40)		18 (0.71)	18 (0.71)	14,5 (0.57)	42 (1.65)	5,2 (0.20)	34 (1.34)	55 (2.17)	16 (0.63)	10 (7.5)	0,047 (0.11)
VUBA 100	BSPP 1	180 (47)		20 (0.79)	26 (1.02)	19 (0.75)	48 (1.89)	7 (0.28)	40 (1.57)	63 (2.48)	22 (0.87)	12 (9)	0,1 (0.22)
VUBA 1215	M12x1.5	15 (4)		8,4 (0.33)	10 (0.39)	7,5 (0.29)	25 (0.98)	1,6 (0.06)	19 (0.75)	35 (1.38)	7 (0.28)	2 (1.5)	0,007 (0.016)
VUBA 1415	M14x1.5	25 (6.5)		11 (0.43)	11,5 (0.45)	9 (0.35)		2,5 (0.10)	23 (0.90)			3 (2.5)	0,012 (0.027)
VUBA 1615	M16x1.5	50 (13)		11 (0.43)	12,7 (0.50)	10 (0.39)	30 (1.18)	3,25 (0.13)	23 (0.90)	41 (1.62)	9,5 (0.37)	3 (2.5)	0,013 (0.029)
VUBA 2215	M22x1.5	80 (21)		13 (0.51)	15 (0.59)	11,5 (0.45)	33 (1.30)	4 (0.16)	29 (1.14)	46 (1.18)	12 (0.47)	4 (3)	0,024 (0.053)