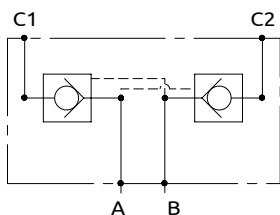
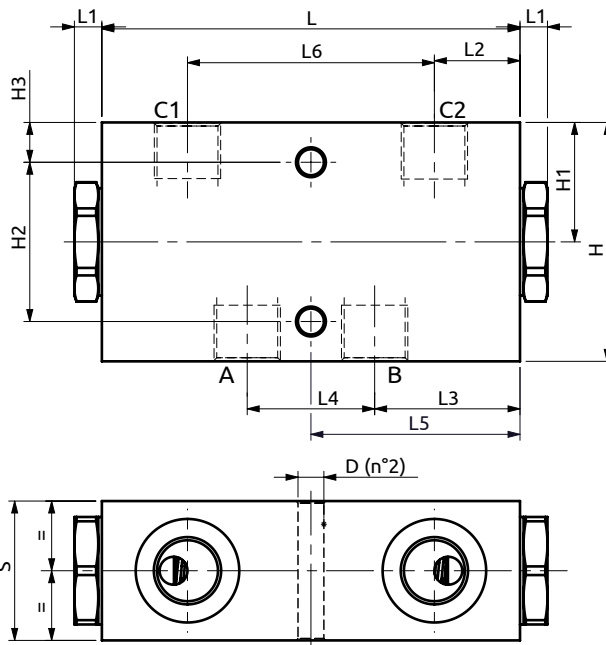
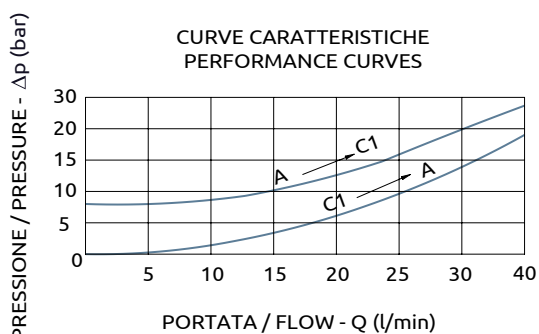




Valvola di blocco doppia pilotata Dual pilot operated check valve



CURVE CARATTERISTICHE
PERFORMANCE CURVES



*Corpo in alluminio / Aluminium body

A050351.04.00	100	7	19	33	34	50	62	30	60	30	40	10	Ø6.5
A050351.06.00	100	9	19	34	32	50	62	35	60	30	40	10	Ø6.5
B050351.02.00	105	7	21.5	36.5	32	52.5	62	35	60	30	40	10	Ø6.5
COD.	L	L1	L2	L3	L4	L5	L6	S	H	H1	H2	H3	D



DESCRIZIONE

Permette il flusso libero da A verso C1 e da B verso C2, mentre nelle direzioni inverse il flusso è pilotato. Idonea al sostentamento di un carico, non al controllo discesa.

DESCRIPTION

The valve allows free flow from A to C1 and from B to C2, whereas in the opposite directions the flow is piloted. Suitable to hold a load not to control a load lowering.

Codice Ordinazione	Rapporto di Pilotaggio	Portata Massima	Pressione Max	Pressione di inizio apertura	Dimensione Porte	Peso
Ordering Code	Pilot Ratio	Max Flow	Max Pressure	Cracking Pressure	Port Size	Weight
A050351.04.00	7.1:1	40 l/min	400 bar	8 bar	3/8"G	1.2 kg
A050351.06.00	7.1:1	40 l/min	350 bar	8 bar	3/8"G	0.7 kg
B050351.02.00	7.1:1	30 l/min	350 bar	4.5 bar	3/8"G	0.7 kg