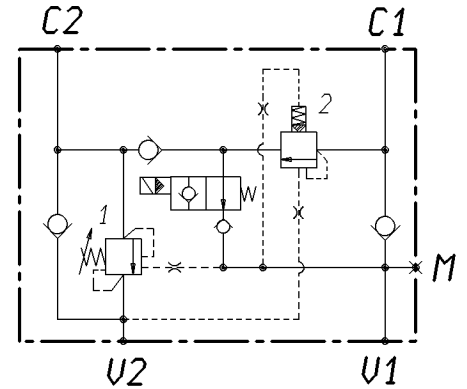
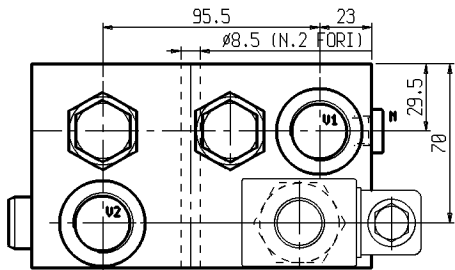
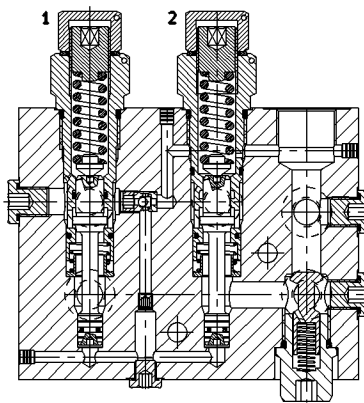
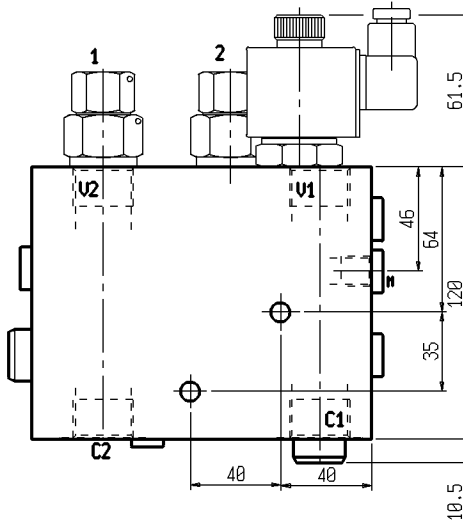
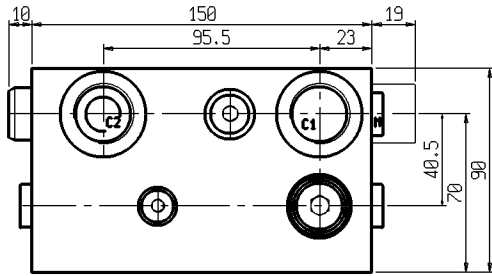




**VALVOLE DI BILANCIAMENTO A DOPPIO EFFETTO
SERIE "33" PER CIRCUITI RIGENERATIVI
CON ESCLUSIONE ELETTRICA**

VBSO-DE-33-CR-EE

05.44.81.03.04.35.00A



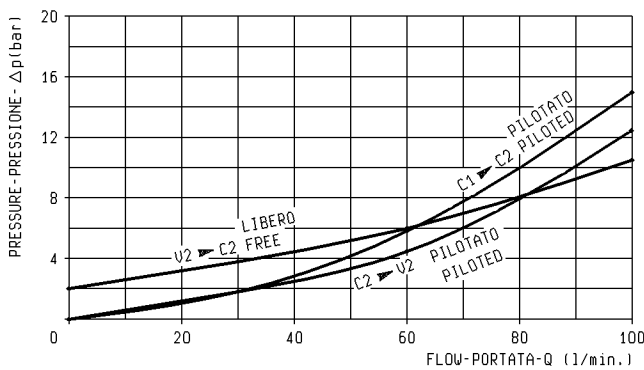
Pressione di lavoro max.
Max. working pressure 350 bar

Portata max. vedi diagramma
Flow max. see performance graph

Peso
Weight. 5.3 Kg

Tensione nominale (V):
Nominal voltage (V): 24 DC

Taratura della valvola: almeno 1,3 volte
superiore alla pressione indotta dal carico
Pressure setting: at least 1,3
times the load induced pressure



**RAPPORTO DI PILOTAGGIO
PILOT RATIO**

1	4 : 1
2	4 : 1

MOLLE/SPRINGS

	Campo taratura min-max bar Adj.press. range bar	Incremento pressione bar/giro vite Pressure increase bar/turn	Taratura standard bar (Q=5 l/min) Std. setting bar (made at= 5 l/min)	Codice ordinazione Ordering code	Colore Colour
1	100-350	110	350	035101184	Giallo yellow
2	100-350	110	350	035101184	Giallo yellow

ATTACCHI/PORT SIZE

	U1-U2-C1-C2	M
	G 3/4	G 1/4