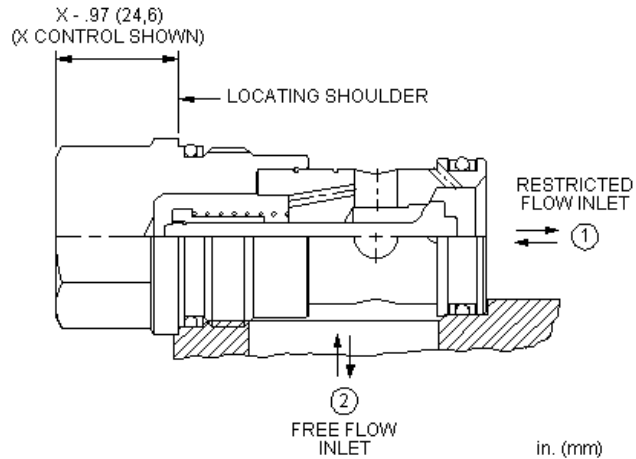
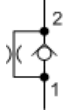


MODEL
CNGC

Fixed orifice, non-pressure compensated, flow control valve with reverse flow check
CAPACITY: 240 L/min. | CAVITY: T-16A



CONFIGURATION

X	Control	Not Adjustable
C	Setting Range	30 psi (2 bar) Cracking Pressure, .016 - .218 in. (0,4 - 5,5 mm)
N	Seal Material	Buna-N
(none)	Material/Coating	Standard Material/Coating

This valve is a fixed orifice, non-pressure compensated flow control with a reverse flow check. The flow setting is specified by the user and is set at the factory.

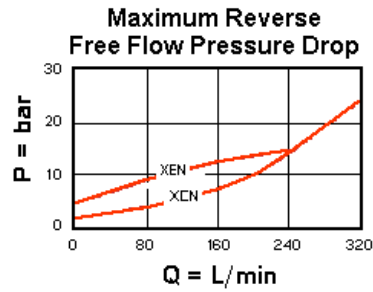
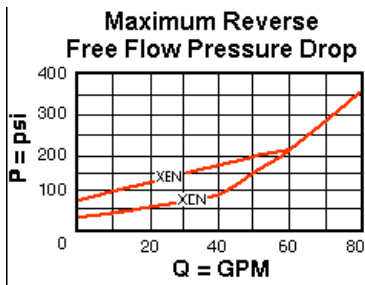
TECHNICAL DATA

Cavity	T-16A
Series	3
Capacity	240 L/min.
Maximum Operating Pressure	350 bar
Orifice Range	0,4 - 5,5 mm
Valve Hex Size	31,8 mm
Valve Installation Torque	203 - 217 Nm
Seal kit - Cartridge	Buna: 990-016-007
Seal kit - Cartridge	Polyurethane: 990-016-002
Seal kit - Cartridge	Viton: 990-016-006
Model Weight	0.46 kg.

TECHNICAL FEATURES

- Customer must specify the orifice diameter.
- These are essentially check valves with bypass orifices. The flow path matches Sun's flow controls and can be used in any flow control manifolds. Valves with the opposite direction of flow can be found under check valves with bypass orifices.
- Because these valves are non-compensating devices, the fixed orifice size will regulate flow through the valve in proportion to the square root of the pressure differential across ports 1 and 2.
- All 2-port flow control cartridges are physically and functionally interchangeable (i.e. same flow path, same cavity for a given frame size). However, cartridge extension dimensions from the mounting surface may vary.
- The customer specified orifice diameter is stamped on one of the cartridge's hex faces.
- Corrosion resistant cartridge valves are intended for use in corrosive environments and are identified by the model code suffix /AP for external stainless steel components, or /LH for external zinc-nickel plated components. See the CONFIGURATION section for all options. For further details, please see the Materials of Construction page located under TECH RESOURCES.
- Incorporates the Sun floating style construction to minimize the possibility of internal parts binding due to excessive installation torque and/or cavity/cartridge machining variations.

PERFORMANCE CURVES



CONFIGURATION OPTIONS

CONTROL

Standard Options	X	Not Adjustable
------------------	---	----------------

SETTING RANGE

Standard Options	A	4 psi (0,3 bar) Cracking Pressure, .016 - .218 in. (0,4 - 5,5 mm)
	B	15 psi (1 bar) Cracking Pressure, .016 - .218 in. (0,4 - 5,5 mm)
	C	30 psi (2 bar) Cracking Pressure, .016 - .218 in. (0,4 - 5,5 mm)
	D	50 psi (3,5 bar) Cracking Pressure, .016 - .218 in. (0,4 - 5,5 mm)
	E	75 psi (5 bar) Cracking Pressure, .016 - .218 in. (0,4 - 5,5 mm)
	F	100 psi (7 bar) Cracking Pressure, .016 - .218 in. (0,4 - 5,5 mm)

SEAL MATERIAL

Standard Options	N	Buna-N
	V	Viton

MATERIAL/COATING

Standard Options		Standard Material/Coating
	/AP	Stainless Steel, Passivated

Copyright © 2002-2014 Sun Hydraulics Corporation. All rights reserved.