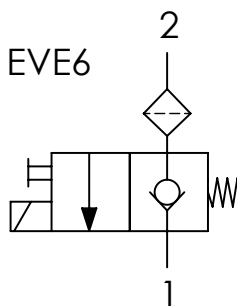
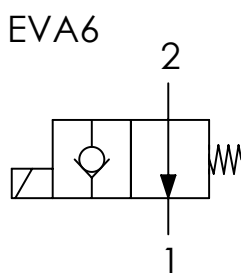
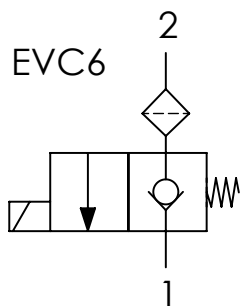




<b>Codice ordinazione</b> <b>Ordering code</b>	01	02	03
	<b>EV</b>		

<b>01</b>	Valvole a comando elettrico SAE8 2 vie/2 posizioni diretta (2 ways/2 positions SAE8 electric valves - direct acting)	<b>EV</b>	
<b>02</b>	Schema (Circuit)	<b>Normalmente chiusa</b> (Normally closed)	<b>C6</b>
		<b>Normalmente chiusa + emerg.</b> (Normally closed + emerg.)	<b>E6</b>
		<b>Normalmente aperta</b> (Normally open)	<b>A6</b>
<b>03</b>	Bobina (Coil) 18W	<b>Senza bobina</b> (Without coil)	/
		<b>12 V (DC)</b>	<b>012DC</b>
		<b>24 V (DC)</b>	<b>024DC</b>
		<b>220 V (50 HZ.)</b> Disponibile solo per EVC6 e EV6 (Available only for EVC6 e EV6)	<b>22050</b>
		<b>220 V (RAC)</b>	<b>220RAC</b>

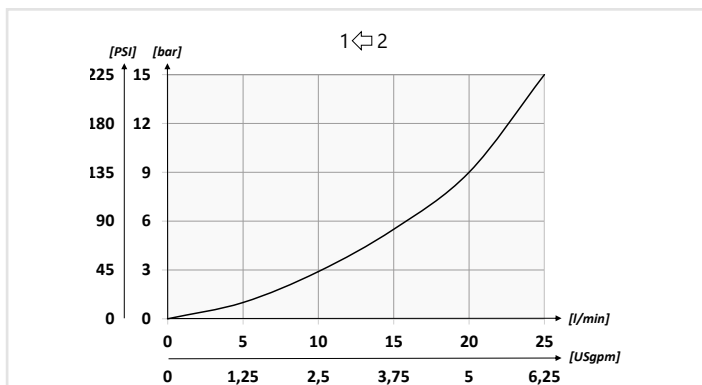
### Schema idraulico - Hydraulic circuit



### Dati tecnici - Technical data

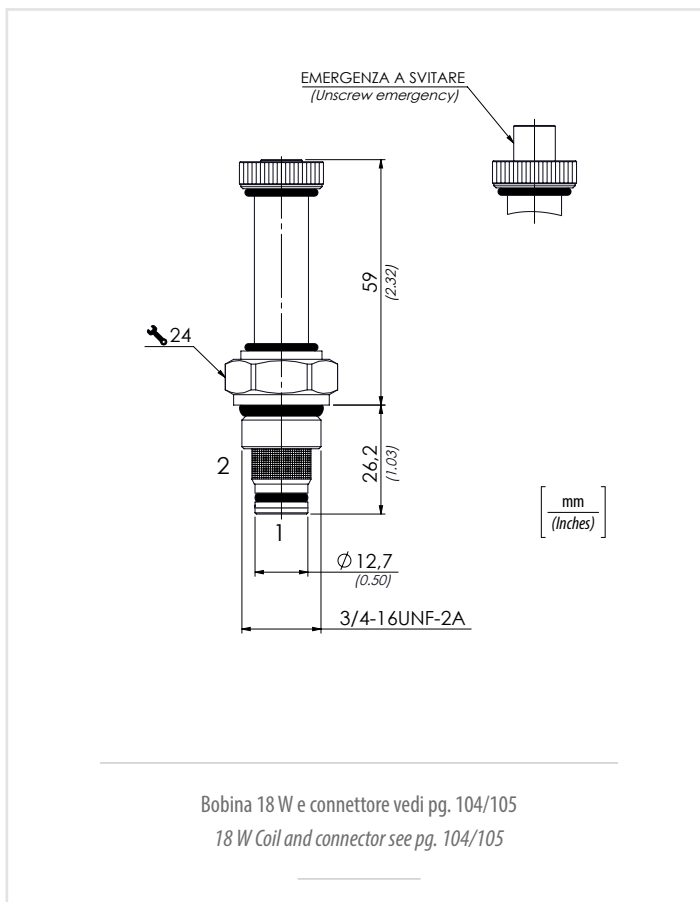
<b>Olio idraulico/Mineral oil</b>	<b>ISO 6743/4 (DIN 51524)</b>
<b>Viscosità olio/Oil viscosity</b>	<b>15-250 mm<sup>2</sup>/s (15 to 250 cSt)</b>
<b>Classe di contaminazione max con filtro</b> Max contamination index with filter	<b>ISO 4406:1999 Classe 19/17/14</b>
<b>Temperatura dell'olio/Oil temperature</b>	<b>-20°C +80°C</b> -4°F + 176°F
<b>Temperatura ambiente/Ambient temperature</b>	<b>-20°C +50°C</b> -4°F + 122°F
<b>Trafilamento massimo</b> Max leakage	<b>0,25 cm<sup>3</sup>/min - 5 gocce/min</b> 0,015 in <sup>3</sup> /min - 5 drops/min
<b>È indispensabile l'utilizzo di un filtro per proteggere la valvola (filtrazione consigliata 15 µm)</b> It is necessary a filter use to protect the valve (advised filtration 15 µm)	

### Performances



Le prove sono state eseguite con solenoidi a temperatura di regime, sottoalimentati del 10% rispetto al valore nominale.

Tests carried out with solenoids at their working temperature, with a supply voltage 10% below the nominal value.



### Caratteristiche tecniche - Technical characteristics

Tipo Type	A	Portata max Max flow l/min-USgpm	Pressione max Max pressure bar/PSI	Peso approssimativo Approx weight kg/lb	Coppia di serraggio Tightening torque Nm/lbf ft	Cavità Cavity
<b>EV6</b>	<b>3/4-16UNF-2A</b>	<b>22 (5.8)</b>	<b>210 (3045)</b>	<b>0,12 (0.26)</b>	<b>30 (22)</b>	<b>SAE 8/2</b>