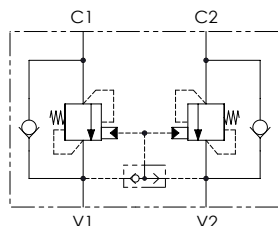


Schema idraulico - Hydraulic circuit

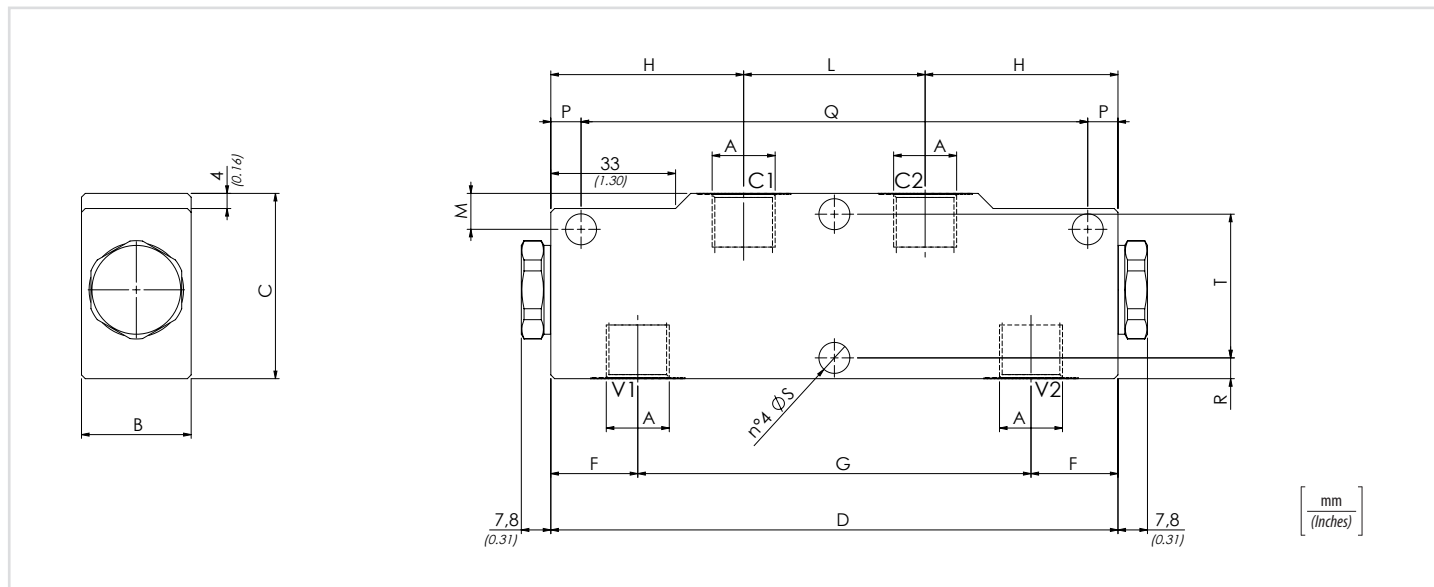
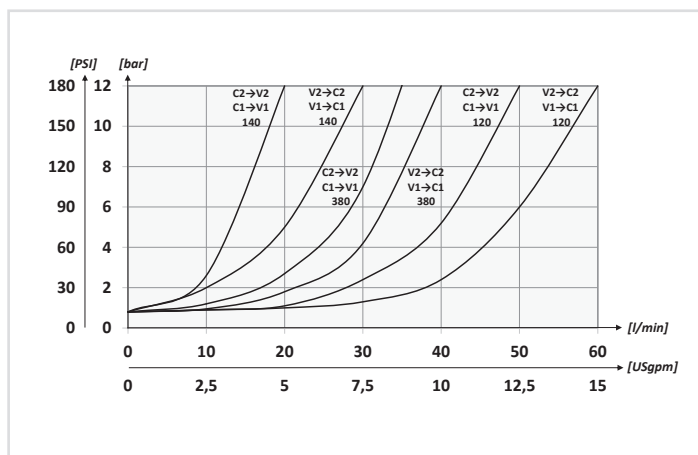


Dati tecnici - Technical data

Olio idraulico/Mineral oil	ISO 6743/4 (DIN 51524)	
Viscosità olio/Oil viscosity	15-250 mm ² /s (15 to 250 cSt)	
Classe di contaminazione max con filtro Max contamination index with filter	ISO 4406:1999 Classe 19/17/14	
Temperatura dell'olio/Oil temperature	-20°C +80°C	-4°F + 176°F
Temperatura ambiente/Ambient temperature	-20°C +50°C	-4°F + 122°F
È indispensabile l'utilizzo di un filtro per proteggere la valvola (filtrazione consigliata 15 µm) It is necessary a filter use to protect the valve (advised filtration 15 µm)		

	01	02	03	04
Codice ordinazione Ordering code	VBZD		2	
01	Valvole di bilanciamento doppie per centro aperto a taratura fissa (Dual counterbalance valves fixed setting for open center)			VBZD
02	Dimensione (Size)	BSPP 1/4		140
		BSPP 3/8		380
		BSPP 1/2		120
03	Taratura (Setting) Q=5 l/min 350 bar (5075 PSI)			2
04	Materiale (Material)	Corpo in acciaio + zincatura (Steel body + zinc-plated)		S
		Corpo in acciaio + zinco-nichel (Steel body + zinc-nickel)		K
Rapporto di pilotaggio (Pilot ratio) 1:4.25				

Performances



Caratteristiche tecniche - Technical characteristics

Tipo Type	A	Portata max Max flow l/min-USgpm	Pressione max Max pressure bar/PSI	B	C	D	F	G	H	L	M	P	Q	R	S	T	Peso approssimativo Approx weight kg/lb						
VBZD140	BSPP 1/4	30 (7.9)	350 (5075)	29 (1.14)	49 (1.93)	150 (5.91)	23 (0.91)	104 (4.09)	51 (2.01)	48 (1.89)	10 (0.39)	8 (0.31)	134 (5.28)	5,5 (0.22)	8,2 (0.32)	38 (1.50)	1,50 (3,30)						
VBZD380	BSPP 3/8	40 (10.6)															59 (2.32)	21 (0.83)	108 (4.25)	12 (0.47)	7,5 (0.29)	43 (1.69)	1,48 (3,25)
VBZD120	BSPP 1/2	60 (15.9)															21 (0.83)	108 (4.25)	12 (0.47)	7,5 (0.29)	43 (1.69)	1,71 (3.76)	