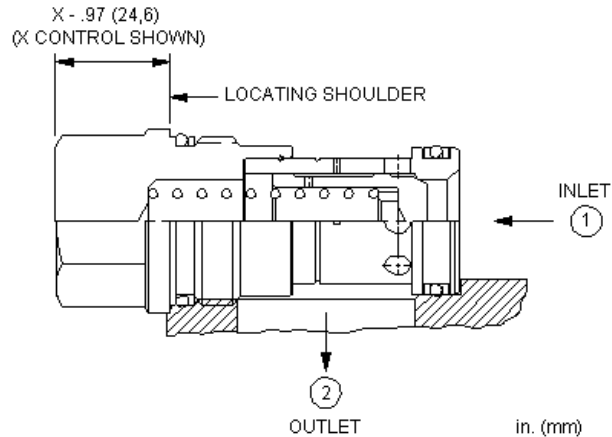


MODEL  
CXHA

Free flow nose to side check valve  
CAPACITY: 320 L/min. | CAVITY: T-16A



**CONFIGURATION**

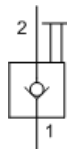
<b>X</b>	Control	Not Adjustable
<b>C</b>	Cracking Pressure	30 psi (2 bar)
<b>N</b>	Seal Material	Buna-N
<b>(none)</b>	Material/Coating	Standard Material/Coating

Free-flow, nose-to-side check valves are on/off circuit components that allow free flow from the inlet (port 1) to the outlet (port 2) and block flow in the opposite direction.

**TECHNICAL DATA**

Cavity	T-16A
Series	3
Capacity	320 L/min.
Maximum Operating Pressure	350 bar
Maximum Valve Leakage at 110 SUS (24 cSt)	0,07 cc/min.
Valve Hex Size	31,8 mm
Valve Installation Torque	203 - 217 Nm
Seal kit - Cartridge	Buna: 990-016-007
Seal kit - Cartridge	Polyurethane: 990-016-002
Seal kit - Cartridge	Viton: 990-016-006
Model Weight	0.43 kg.

**SYMBOLS**

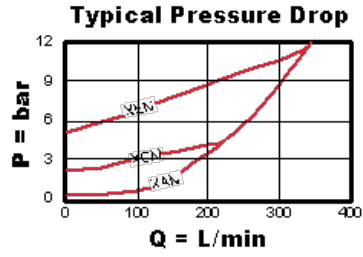
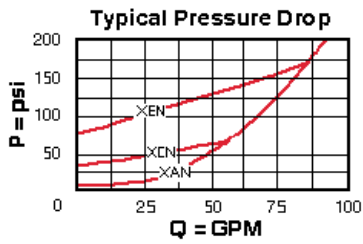


**TECHNICAL FEATURES**

- Two-port check valves share the same cavity for a given frame size, however, pay close attention as flow paths may be in opposite directions.
- Check valves offer extremely low leakage rates with a maximum leakage of less than 1 drop per minute (0,07 cc/min).
- Will accept 5000 psi (350 bar) at ports 1 and 2.
- Corrosion resistant cartridge valves are intended for use in corrosive environments and are identified by the model code suffix /AP (see Option Selection below). External parts are made from stainless steel with titanium or brass components, where applicable. Internal parts are made from carbon steel leaded alloy, the same as standard valves. For further details, please see the Materials of Construction page.
- Incorporates the Sun floating style construction to minimize the possibility of internal parts binding due to excessive installation torque and/or

cavity/cartridge machining variations.

**PERFORMANCE CURVES**



**CONFIGURATION OPTIONS**

**CONTROL**

Preferred Options	X	Not Adjustable
-------------------	---	----------------

**CRACKING PRESSURE**

Preferred Options	A	4 psi (0,3 bar)
	C	30 psi (2 bar)
Standard Options	B	15 psi (1 bar)
	D	50 psi (3,5 bar)
	E	75 psi (5 bar)
	F	100 psi (7 bar)

**SEAL MATERIAL**

Preferred Options	N	Buna-N
Standard Options	V	Viton

**MATERIAL/COATING**

		Standard Material/Coating
Standard Options	/AP	Stainless Steel, Passivated
	/LH	Mild Steel, Zinc-Nickel

Copyright © 2002-2014 Sun Hydraulics Corporation. All rights reserved.