

Relief, direct acting guided poppet type, hardened seat  
Special cavity, 008

VS-30-NCF

04.11.18 - X - 09 - Z

**RE 18318-24**

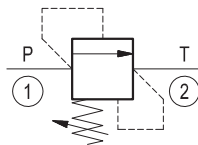
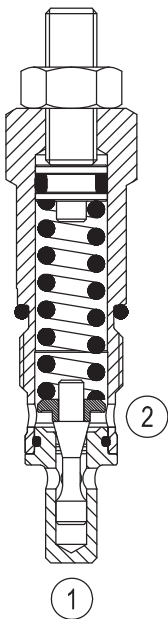
Edition: 03.2016

Replaces: 04.2013



**Description**

Flow is blocked from 1 to 2 until pressure increases to meet the selected valve setting, lifting the poppet from its seat and allowing relief flow through 2 to tank. Pressure at 2 is additive to the relief setting of the valve. The unique Bosch Rexroth Oil Control poppet design provides enhanced stability at all flows and pressures. A hardened seat is provided for increased durability in high-pressure, high-cycle applications.



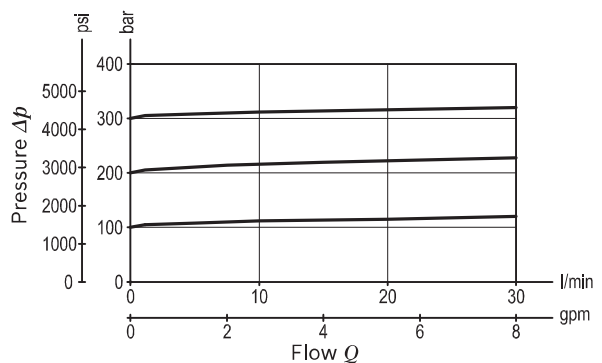
Technical data	
Max. operating pressure port 1 (P)	420 bar (6000 psi)
Max. pressure admitted port 2 (T)	140 bar (2000 psi)
Max. flow	30 l/min (8 gpm)
Max. internal leakage <sup>1)</sup>	5 drops/min.
Fluid temperature range	-30 to 100 °C (-22 to 212 °F)
Installation torque	45 - 50 Nm (33 - 37 ft-lbs)
Weight	0.17 kg (0.38 lbs)
Special cavity	008 (see data sheet 18325-75)
Lines bodies and standard assemblies	Please refer to section "Hydraulic integrated circuit" or consult factory
Seal kit <sup>2)</sup>	Code: RG0008010000100 material no: R930001692
Fluids	Mineral-based or synthetics with lubricating properties at viscosities of 10 to 500 mm <sup>2</sup> /s (cSt)
Recommended degree of fluid contamination	Nominal value max. 10µm (NAS 8) / ISO 4406 19/17/14
Installation position	No restrictions
Other Technical Data	See data sheet 18350-50

1) At 80% of pressure setting

2) Only external seals for 10 valves

**Note:** the pressure setting must be done after installation, because the spring cannot be compressed while the cartridge is out of the cavity. For the same reason the threaded adjuster must be fully released prior to unscrewing the cartridge from the cavity.

**Characteristic curve**



**Ordering code**

04.11.18	X	09	Z	00	*
----------	---	----	---	----	---

Relief, direct acting guided poppet type hardened seat

Series 0/A to L  
unchanged performances and dimensions

Version and options standard

**Adjustments**

**03** Leakproof hex. socket screw

**09** Special cavity, 008

**SPRINGS**

	Adj. press. range bar (psi)	Pressure increase bar/turn (psi/turn)
<b>05</b>	* 5-50 (75-725)	12 (174)
<b>20</b>	50-210 (725-3000)	47 (682)
<b>35</b>	100-350 (1450-5000)	82 (1189)
<b>42</b>	100-420 (1450-6000)	107 (1552)

Note: Special settings available. Contact factory authorized representative for ordering code.

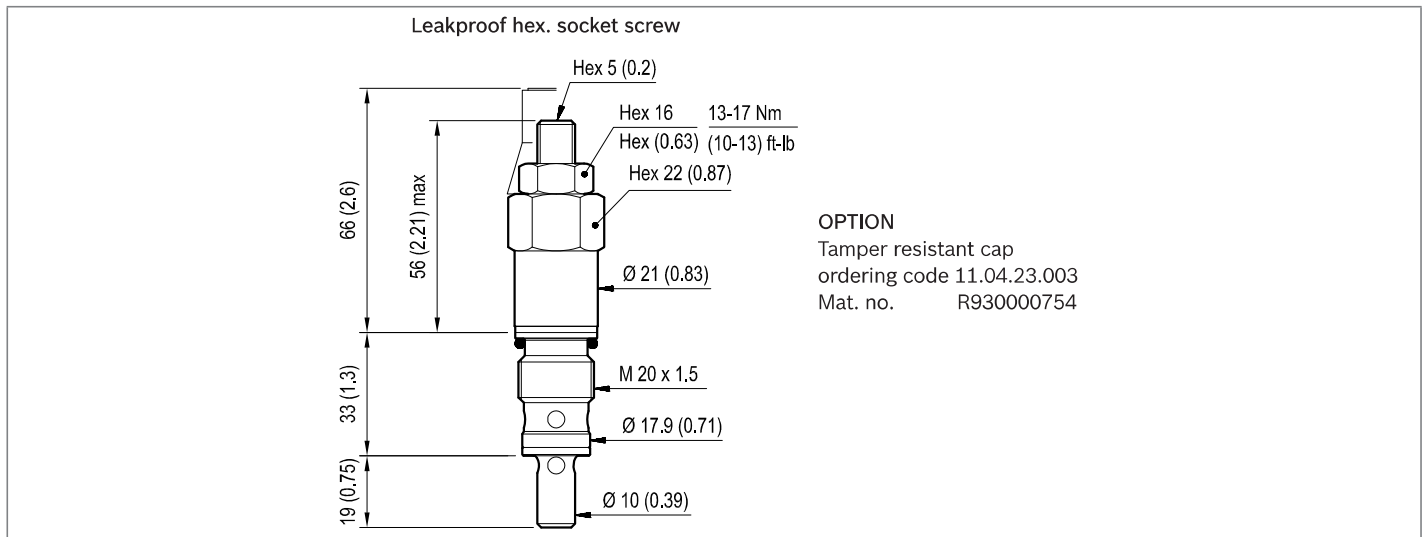
\* minimum pressure setting intended with Q=5 l/min

**Preferred types**

Type	Material number
04111803090500A	R930000129
04111803092000D	R930000132
04111803093500C	R901144794
041118030942000	R930000134

Type	Material number

**Dimensions**



**Bosch Rexroth Oil Control S.p.A.**

Via Leonardo da Vinci 5  
P.O. Box no. 5  
41015 Nonantola – Modena, Italy  
Tel. +39 059 887 611  
Fax +39 059 547 848  
compact-hydraulics-cv@boschrexroth.com  
www.boschrexroth.com/compacthydraulics

© This document, as well as the data, specifications and other information set forth in it, are the exclusive property of Bosch Rexroth Oil Control S.p.a.. It may not be reproduced or given to third parties without its consent. The data specified above only serve to describe the product. No statements concerning a certain condition or suitability for a certain application can be derived from our information. The information given does not release the user from the obligation of own judgment and verification. It must be remembered that our products are subject to a natural process of wear and aging. Subject to change.