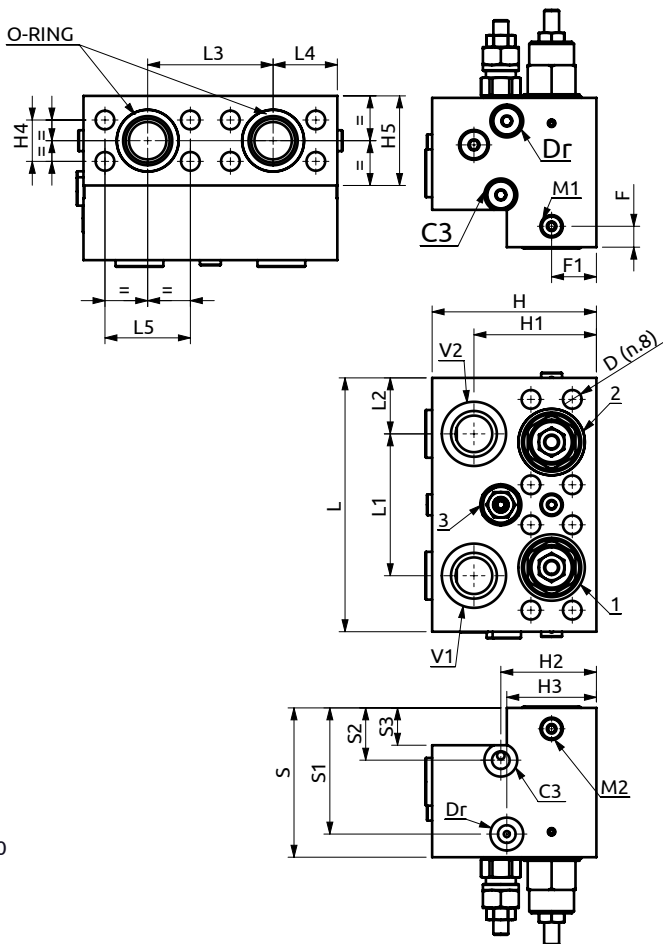
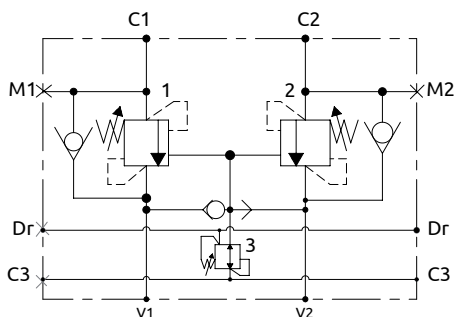
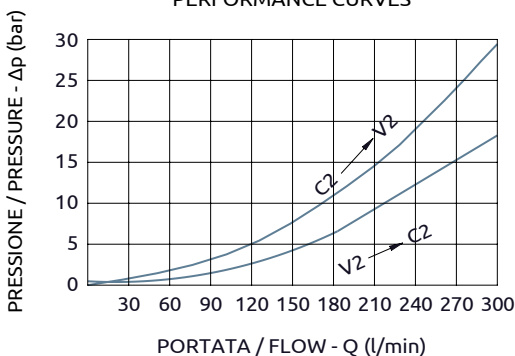




Valvola di blocco bilanciata doppia flangiabile per motori idraulici
Dual overcentre valve, flangeable for hydraulic motors

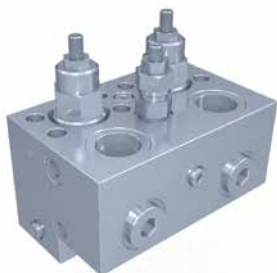


CURVE CARATTERISTICHE
 PERFORMANCE CURVES



Corpo in acciaio / Steel body

A078481.06.00	170	95	37.5	84	43	57.2	100	84.5	35	25	110	82	64	60	27.7	60	14	30	Ø12.5	10 kg
A078581.03.00	200	110	45	99	50.5	66.7	129	109	60	40	130	95	65	60	31.8	60	40	30	Ø14.5	12 kg
COD.	L	L1	L2	L3	L4	L5	S	S1	S2	S3	H	H1	H2	H3	H4	H5	F	F1	D	WEIGHT



DESCRIZIONE	DESCRIPTION
Valvola di blocco bilanciata doppia con flangiatura per motori idraulici SH11C.	Dual flangeable overcenter valve for hydraulic motors SH11C.

Codice Ordinazione	Rapporto di Pilotaggio	Campo di Taratura	Taratura Standard	Incremento per Giro	Portata Massima	Pressione Max	Dimensione Porte
Ordering Code	Pilot Ratio	Pressure Range	Standard Setting	Pressure Increase	Max Flow	Max Pressure	Port Size
A078481.06.00	8:1	1,2	140-350 bar	350 bar	130 bar/turn	300 l/min	350 bar
	-	3	10-70 bar	20 bar	16.5 bar/turn		
A078581.03.00	8:1	1,2	140-350 bar	350 bar	130 bar/turn	300 l/min	350 bar
	-	3	15-45 bar	20 bar	10.5 bar/turn		