

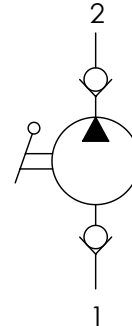


La pompa viene fornita con leva di azionamento L=270 mm  
The pump is supplied with acting lever 10,5 in log

	01	02	03
<b>Codice ordinazione</b> <b>Ordering code</b>	<b>PME</b>		<b>L</b>

<b>01</b>	Pompe a mano (Cartridge hand pumps)	<b>PME</b>
<b>02</b>	Cilindrata (cm <sup>3</sup> ) Displacement (in <sup>3</sup> )	<b>05</b> <b>06</b> <b>07</b>
<b>03</b>	Leva (Hand lever)	<b>L</b>

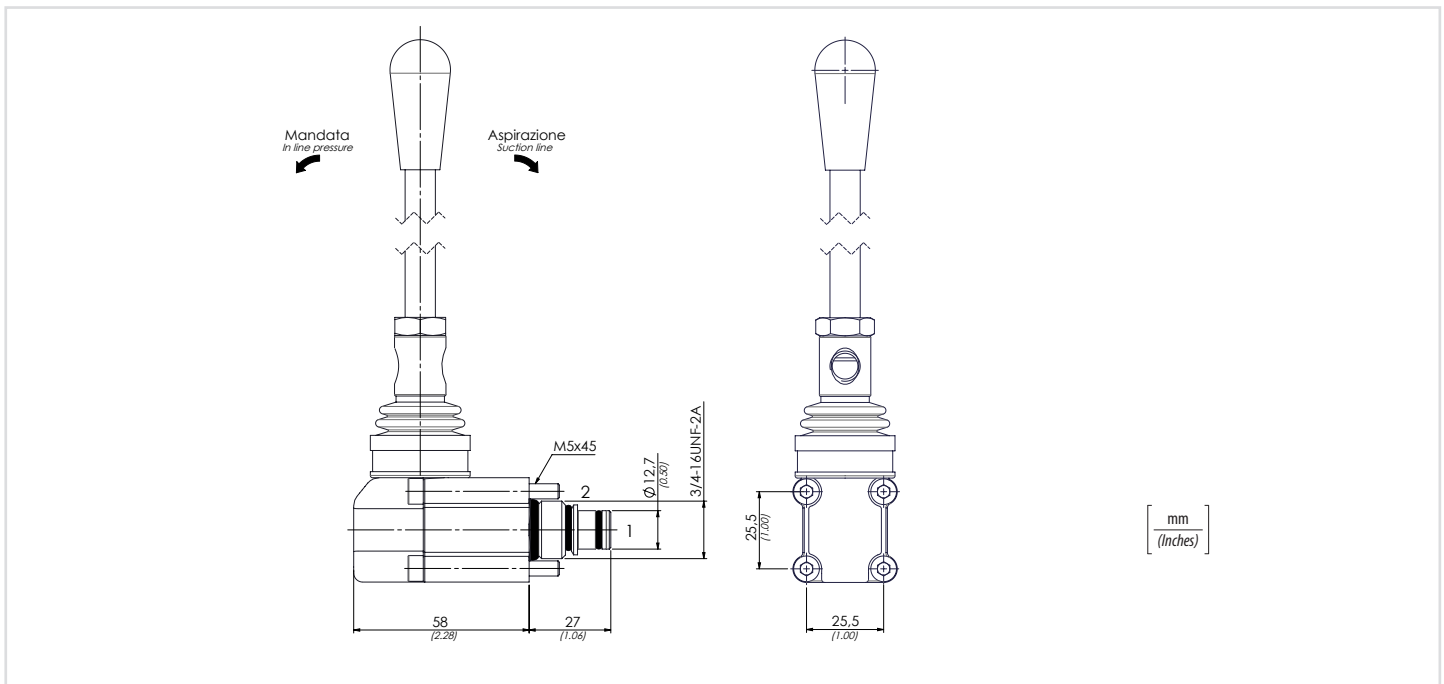
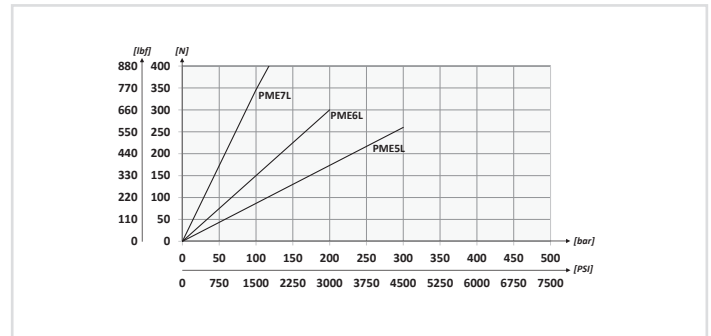
### Schema idraulico - Hydraulic circuit



### Dati tecnici - Technical data

<b>Olio idraulico/Mineral oil</b>	ISO 6743/4 (DIN 51524)	
<b>Viscosità olio/Oil viscosity</b>	15-250 mm <sup>2</sup> /s (15 to 250 cSt)	
<b>Classe di contaminazione max con filtro</b> Max contamination index with filter	ISO 4406:1999 Classe 19/17/14	
<b>Temperatura dell'olio/Oil temperature</b>	-20°C +80°C	-4°F + 176°F
<b>Temperatura ambiente/Ambient temperature</b>	-20°C +50°C	-4°F + 122°F
<b>È indispensabile l'utilizzo di un filtro per proteggere la valvola (filtrazione consigliata 15 µm)</b> It is necessary a filter use to protect the valve (advised filtration 15 µm)		
<b>Trafilamento massimo</b> Max leakage	0,25 cm <sup>3</sup> /min - 5 gocce/min	0,015 in <sup>3</sup> /min - 5 drops/min

### Performances



### Caratteristiche tecniche - Technical characteristics

Tipo (Type)	Cilindrata (cm <sup>3</sup> ) Displacement (in <sup>3</sup> )	Pressione max (bar) Max pressure (PSI)	Peso approssimativo (kg) Approx weight (lb)	Coppia di serraggio (Nm) Tightening torque (lbf ft)	Cavità (Cavity)
<b>PME5L</b>	1 (0.06)	300 (4350)	<b>0,46 (1.01)</b>	<b>25-30 (19-22)</b>	<b>SAE8/2</b>
<b>PME6L</b>	2 (0.12)	200 (2900)			
<b>PME7L</b>	3 (0.18)	120 (1740)			