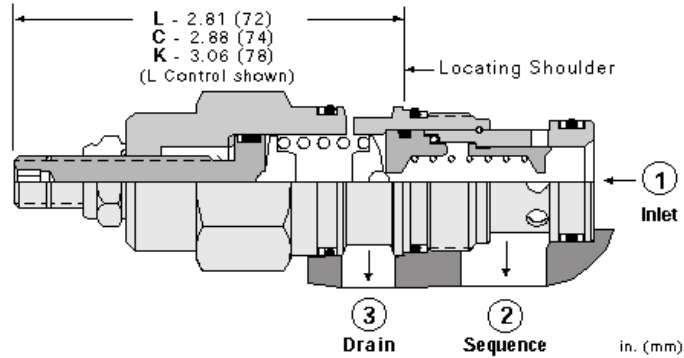
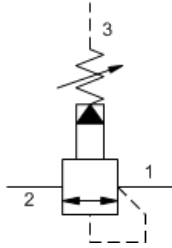


MODEL  
RSFC

Pilot operated, balanced piston sequence valve  
CAPACITY: 120 L/min. | CAVITY: T-2A



**CONFIGURATION**

<b>L</b>	Control	Standard Screw Adjustment
<b>A</b>	Adjustment Range	100 - 3000 psi (7 - 210 bar), 1000 psi (70 bar) Standard Setting
<b>N</b>	Seal Material	Buna-N
<b>(none)</b>	Material/Coating	Standard Material/Coating

Pilot-operated, balanced piston sequence valves will supply a secondary circuit with flow once the pressure at the inlet (port 1) has exceeded the valve setting. The pressure setting of a sequence valve controls the pressure at port 1 relative to the pressure at the drain (port 3). These valves are insensitive to back pressure at port 2 (sequence), up to the valve setting. They may be used to regulate pressure in place of 2-port relief valves if there is pressure in the return line.

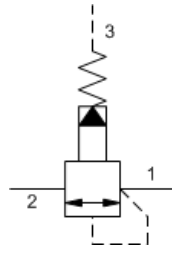
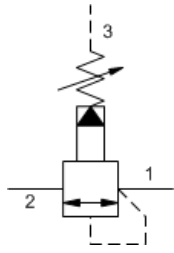
**NOTES**

For cartridges configured with an O control (panel mount handknob), a .75 in. (19 mm) diameter hole is required in the panel.

**TECHNICAL DATA**

Cavity	T-2A
Series	2
Capacity	120 L/min.
Factory Pressure Settings Established at	15 L/min.
Maximum Operating Pressure	350 bar
Control Pilot Flow	0,16 - 0,25 L/min.
Response Time - Typical	10 ms
Maximum Valve Leakage at 110 SUS (24 cSt)	50 cc/min.@70 bar
Adjustment - Number of Clockwise Turns to Increase Setting	5
Valve Hex Size	28,6 mm
Valve Installation Torque	61 - 68 Nm
Adjustment Screw Internal Hex Size	4 mm
Locknut Hex Size	15 mm
Locknut Torque	9 - 10 Nm
Seal kit - Cartridge	Buna: 990-202-007
Seal kit - Cartridge	Polyurethane: 990-002-002
Seal kit - Cartridge	Viton: 990-202-006
Model Weight	0.29 kg.

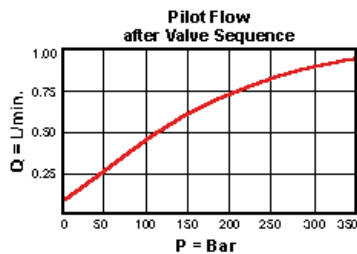
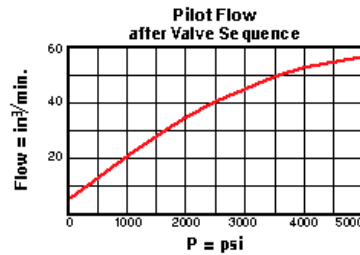
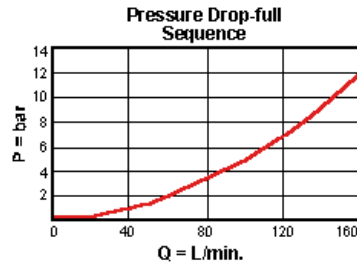
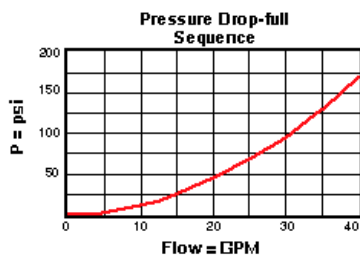
**SYMBOLS**



## TECHNICAL FEATURES

- All 3 port sequence cartridges are physically and functionally interchangeable (i.e. same flow path, same cavity for a given frame size).
- Pilot flow continues to increase as the pressure at port 1 (inlet), relative to the pressure at port 3 (drain), rises above the valve setting.
- The main stage orifice is protected by a 150 micron stainless steel screen.
- Pressure at port 3 is directly additive to the valve setting at a 1:1 ratio and should not exceed 5000 psi (350 bar).
- Not suitable for use in load holding applications due to spool leakage.
- W and Y controls (where applicable) can be specified with or without a special setting. When no special setting is specified, the valve is adjustable throughout its full range using the W or Y control. When a special setting is specified, this setting represents the maximum setting of the valve.
- Incorporates the Sun floating style construction to minimize the possibility of internal parts binding due to excessive installation torque and/or cavity/cartridge machining variations.

## PERFORMANCE CURVES



## CONFIGURATION OPTIONS

### CONTROL

Control Type	Option Code	Description
Preferred Options	L	Standard Screw Adjustment
	C	Tamper Resistant - Factory Set
	J	Capped Screw Adjustment
Standard Options	K	Handknob
	O	Handknob with Panel Mount
	W	Hex Wrench Adjustment

### ADJUSTMENT RANGE

Adjustment Range	Option Code	Description
Preferred Options	A	100 - 3000 psi (7 - 210 bar), 1000 psi (70 bar) Standard Setting
	W	150 - 4500 psi (10,5 - 315 bar), 1000 psi (70 bar) Standard Setting

<b>Standard Options</b>	<b>B</b>	50 - 1500 psi (3,5 - 105 bar), 1000 psi (70 bar) Standard Setting
	<b>C</b>	150 - 6000 psi (10,5 - 420 bar), 1000 psi (70 bar) Standard Setting
	<b>D</b>	25 - 800 psi (1,7 - 55 bar), 400 psi (28 bar) Standard Setting
	<b>E</b>	25 - 400 psi (1,7 - 28 bar), 200 psi (14 bar) Standard Setting
	<b>N</b>	60 - 800 psi (4 - 55 bar), 400 psi (28 bar) Standard Setting
	<b>Q</b>	60 - 400 psi (4 - 28 bar), 200 psi (14 bar) Standard Setting

---

**SEAL MATERIAL**

---

<b>Preferred Options</b>	<b>N</b>	Buna-N
--------------------------	----------	--------

---

<b>Standard Options</b>	<b>V</b>	Viton
-------------------------	----------	-------

---

**MATERIAL/COATING**

---

<b>Standard Options</b>		Standard Material/Coating
	<b>/AP</b>	Stainless Steel, Passivated

---

**RELATED MODELS**

RSFC8

Pilot operated, balanced piston sequence main stage with integral T-8A control cavity

Copyright © 2002-2014 Sun Hydraulics Corporation. All rights reserved.