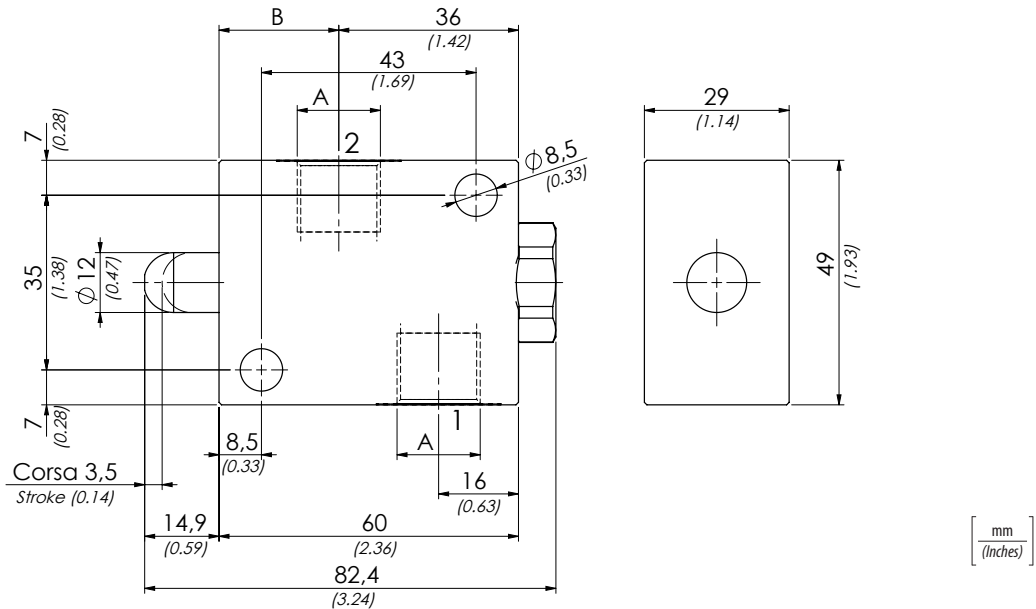
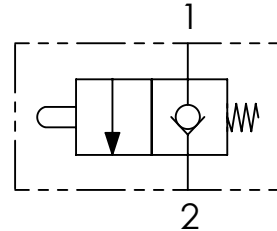


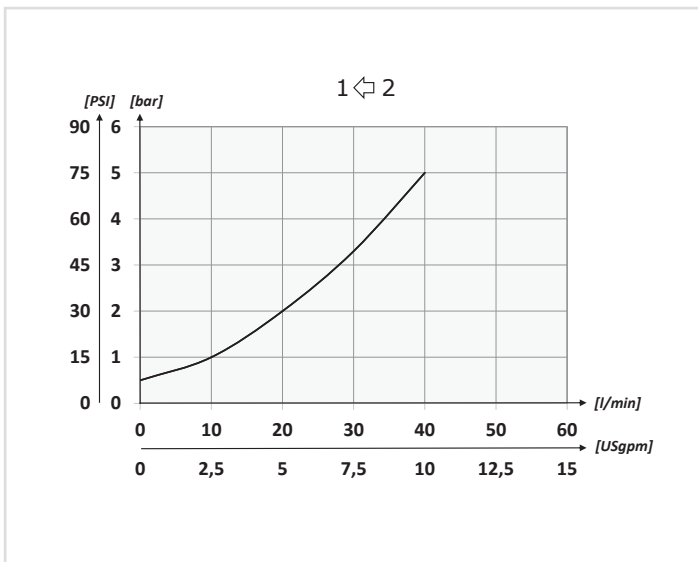
<b>Codice ordinazione</b> <b>Ordering code</b>	01	02
	<b>FCM</b>	

<b>01</b>	Valvole di fine corsa normalmente chiuse (Normally closed end - stroke valves)	<b>FCM</b>
<b>02</b>	Dimensione (Size)	BSPP 1/4
		BSPP 3/8
		<b>140N</b>
		<b>380N</b>

### Schema idraulico - Hydraulic circuit



### Performances



### Dati tecnici - Technical data

<b>Olio idraulico/Mineral oil</b>	ISO 6743/4 (DIN 51524)
<b>Viscosità olio/Oil viscosity</b>	15-250 mm <sup>2</sup> /s (15 to 250 cSt)
<b>Classe di contaminazione max con filtro</b> Max contamination index with filter	ISO 4406:1999 Classe 19/17/14
<b>Temperatura dell'olio/Oil temperature</b>	-20°C +80°C      -4°F + 176°F
<b>Temperatura ambiente/Ambient temperature</b>	-20°C +50°C      -4°F + 122°F
<b>È indispensabile l'utilizzo di un filtro per proteggere la valvola (filtrazione consigliata 15 µm)</b> It is necessary a filter use to protect the valve (advised filtration 15 µm)	

### Caratteristiche tecniche - Technical characteristics

Tipo Type	A	B	Portata max Max flow l/min-USgpm	Pressione max (bar) Max pressure (PSI)	Peso approssimativo Approx weight kg-lb
<b>FCM140N</b>	<b>BSPP 1/4</b>	26,5 (1.04)	40 (10.6)	350 (5075)	<b>0,53 (1.16)</b>
<b>FCM380N</b>	<b>BSPP 3/8</b>	24 (0.94)			<b>0,50 (1.10)</b>