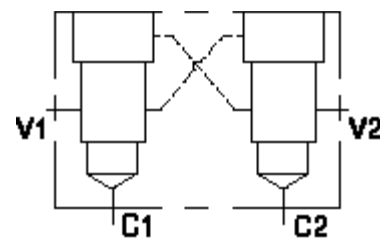


Functional Group:

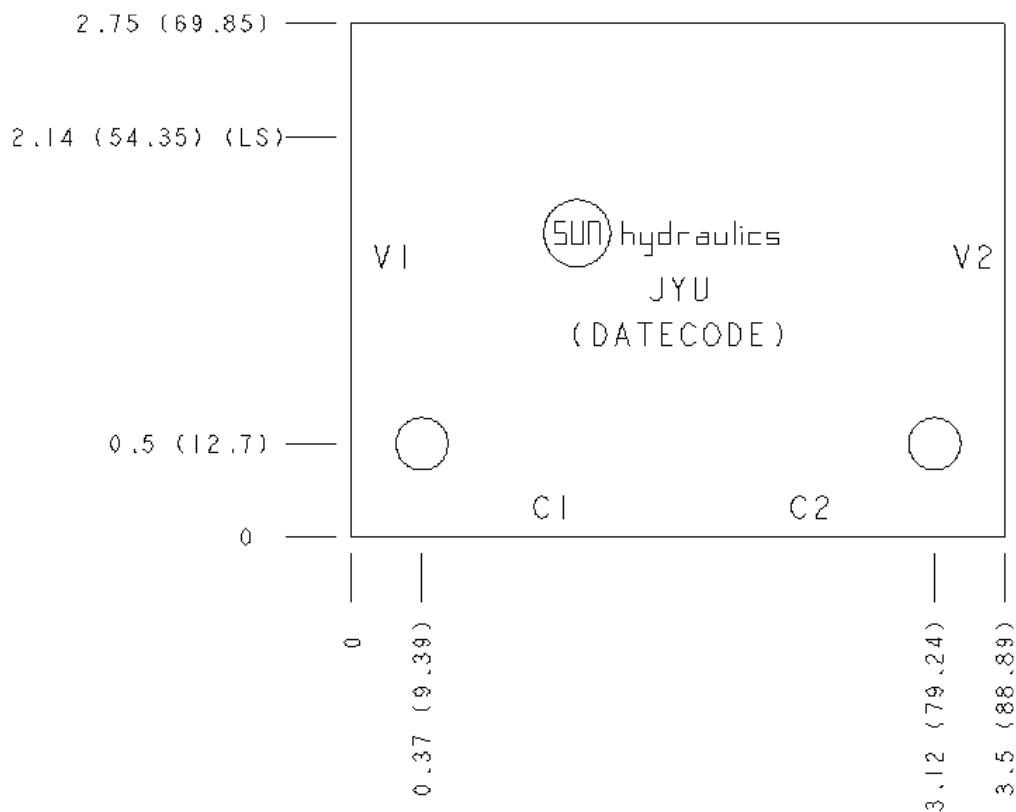
Products : Manifolds : Line Mount : Pilot-to-Open Check : 3 Port : Cross pilot

Model:

JYU



Face: 6



Port Headings and Sizes

JYU All Ports 3/8" BSPP

Technical Data

	U.S. Units	Metric Units
Cavity	T-163A	
Body Features	Cross pilot	
Body Type	Line mount	
Interface	None	
Open Cavity Quantity	2	

Mounting Hole Diameter	.28 in.	7,1 mm
Mounting Hole Depth	Through	
Mounting Hole Quantity	2	
Model Weight	0.73 lb.	0.33 kg.

Option Selection

U.S. Dollar

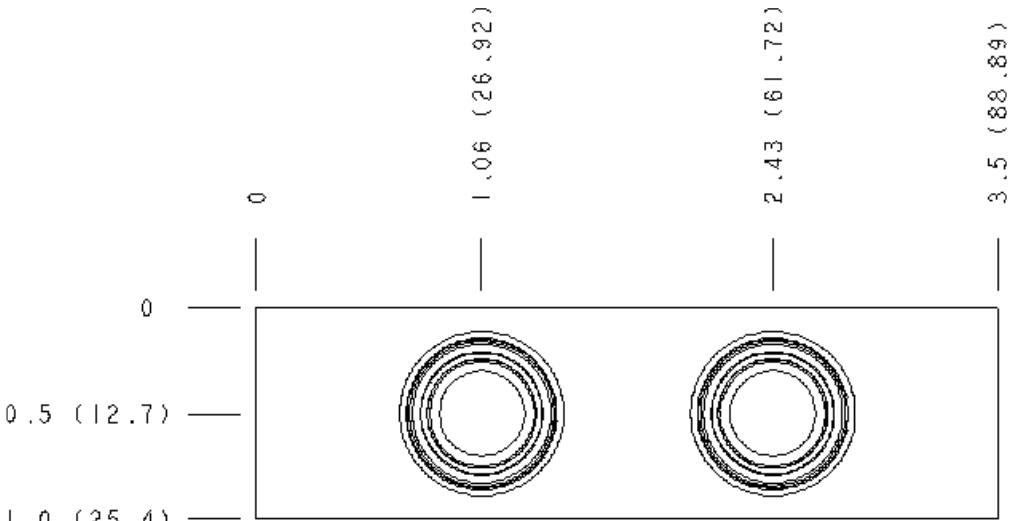
Aluminum Body Pressure Rating: **3000 psi (210 bar)**
Ductile Iron Body Pressure Rating: **5000 psi (350 bar)**

Model Code	Description
JYU	Aluminum, Buna-N, U.S. Units
JYU/S	Ductile Iron, Buna-N, U.S. Units

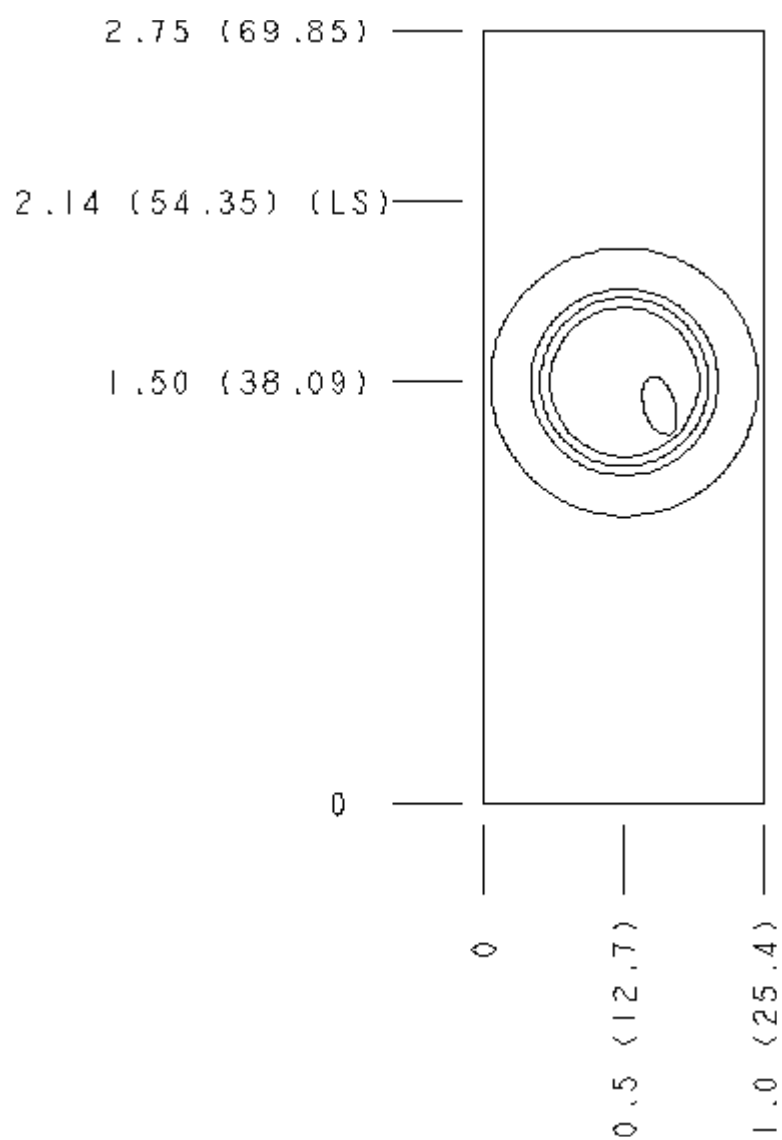
Special Notes

- Important:** Please carefully consider the maximum system pressure to which the manifold will be exposed. The pressure rating of the manifold is dependent on the manifold material, with the port type and sizing a secondary consideration. For example, manifolds constructed of aluminum are not rated for system pressures higher than 3000 psi (210 bar), regardless of the port type and size specified.

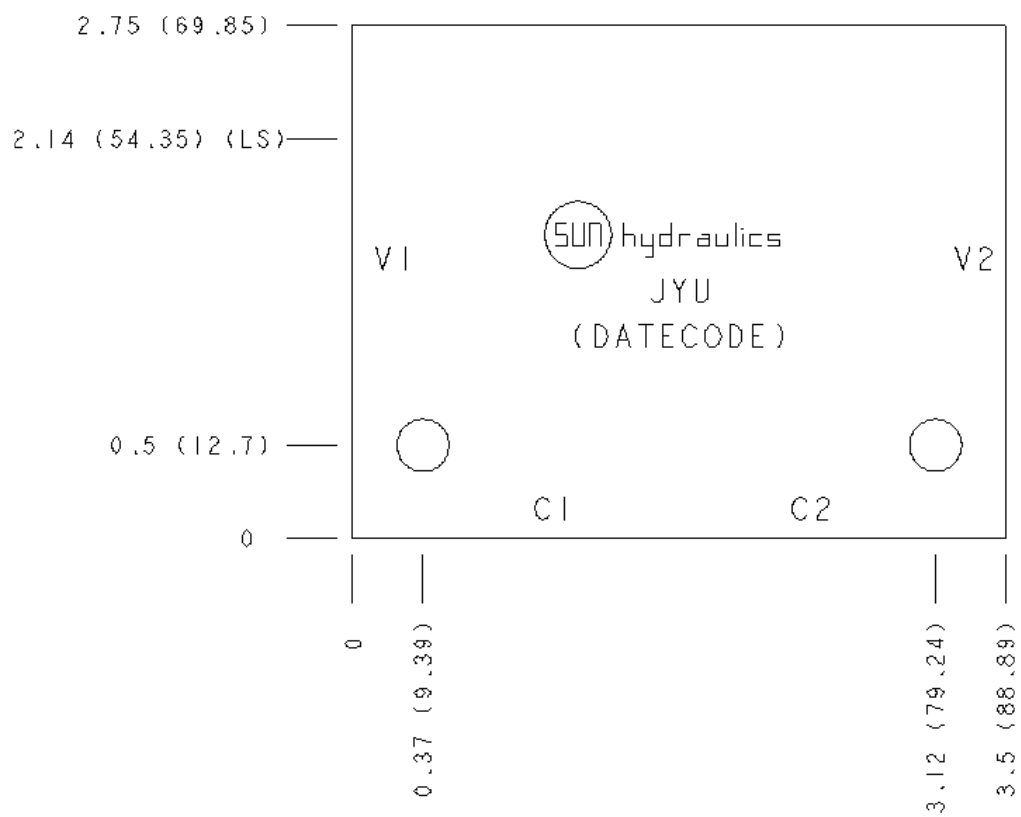
Face 2



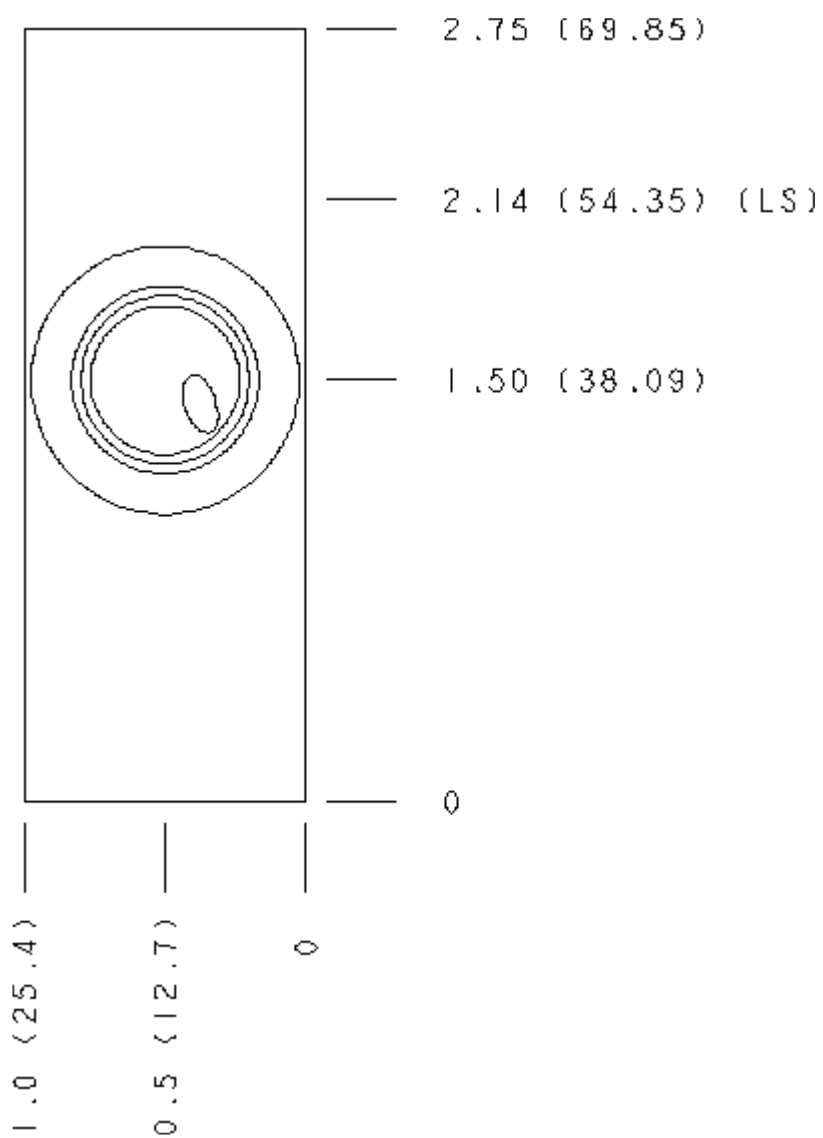
Face 5



Face 6



Face 7



Face 10

