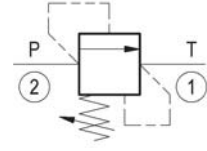
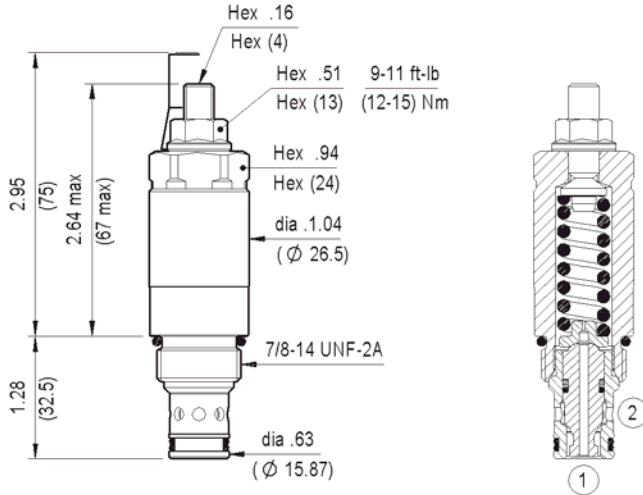


**RELIEF, DIRECT ACTING POPPET TYPE
DIFFERENTIAL AREA
COMMON CAVITY**

VSDN-10A

SIZE 10

04.15.23 - X - 85 - Z

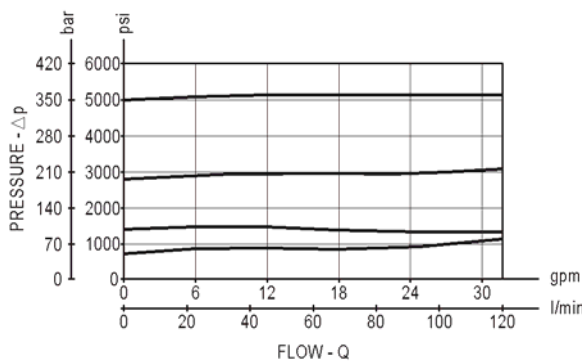


TECHNICAL DATA

Max. pressure:	5000 psi	(350 bar)
Max. flow:	32 gpm	(120 l/min)
Cavity :	CA-10A-2N (see page CT.A.001.U)	
Installation torque :	30-35 ft-lb	(41-47 Nm)
Weight:	0.441 lbs	(0.200 Kg)

Inches
(mm)

Flow is blocked from 2 to 1 until pressure increases to meet the selected valve setting, lifting the poppet from its seat and allowing relief flow through port 1 to tank. Pressure at port 1 is additive to the relief setting of the valve. The unique Oil Control poppet design provides enhanced stability at all flows and pressures.



X ADJUSTMENTS

03 Leakproof hex. socket screw



SPRINGS

Z	SPRINGS		
	Adj. press. range psi (bar)	Press. increase psi / turn (bar/turn)	Standard setting psi (bar) (Q=5 l/min)
10	500-2000 (35-140)	667 (46)	1450 (100)
35	1450-5000 (100-350)	1247 (86)	5000 (350)

OPTIONS

Ordering code

Description

11.04.23.002



Tamper resistant cap

Special settings available. Contact factory authorized representative for ordering code.