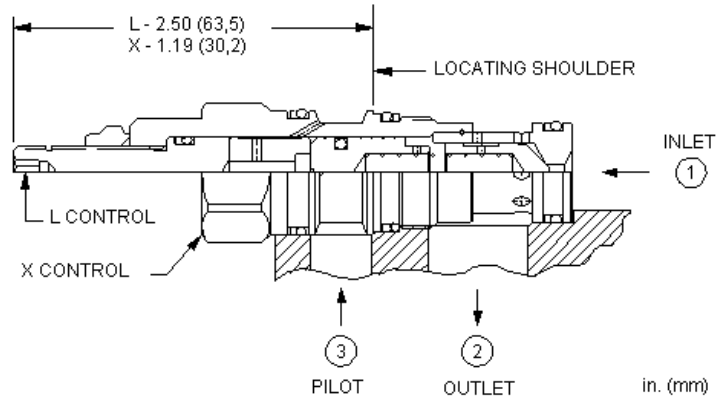
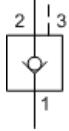


MODEL
CODD

20:1 ratio, pilot-to-close check valve
CAPACITY: 2,8 mm | CAVITY: T-11A



CONFIGURATION

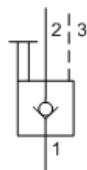
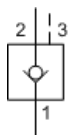
X	Control	Standard Pilot
D	Cracking Pressure	50 psi (3,5 bar)
N	Seal Material	Buna-N
(none)	Material/Coating	Standard Material/Coating

This valve is a spring biased closed, pilot-to-close check cartridge that has a 20:1 pilot ratio. The valve allows flow from port 1 to port 2 and blocks reverse flow. Pressure at the pilot (port 3) opposes pressure at port 1 at a ratio of 20:1.

TECHNICAL DATA

Cavity	T-11A
Series	1
Capacity	2,8 mm
Maximum Operating Pressure	350 bar
Maximum Valve Leakage at 110 SUS (24 cSt)	0,07 cc/min.
Valve Hex Size	22,2 mm
Valve Installation Torque	41 - 47 Nm
Seal kit - Cartridge	Buna: 990-011-007
Seal kit - Cartridge	Polyurethane: 990-011-002
Seal kit - Cartridge	Viton: 990-011-006
Model Weight	0.13 kg.

SYMBOLS



TECHNICAL FEATURES

- Pressure at the port 2 area directly opposes pilot pressure.
- Reverse flow through the valve from port 2 to port 1 is not possible under any condition.
- The valve is a poppet design that results in very low leakage of stored fluid from the accumulator.
- With equal pressures at all ports the valve is closed.
- Capacity is the equivalent of a .109 in. (2,8 mm) diameter orifice.
- Incorporates the Sun floating style construction to minimize the possibility of internal parts binding due to excessive installation torque and/or cavity/cartridge machining variations.

CONFIGURATION OPTIONS

CONTROL

Standard Options	X	Standard Pilot
-------------------------	---	----------------

CRACKING PRESSURE

Standard Options	D	50 psi (3,5 bar)
	H	200 psi (14 bar)

SEAL MATERIAL

Standard Options	N	Buna-N
	V	Viton

MATERIAL/COATING

Standard Options		Standard Material/Coating
	/AP	Stainless Steel, Passivated

Copyright © 2002-2014 Sun Hydraulics Corporation. All rights reserved.