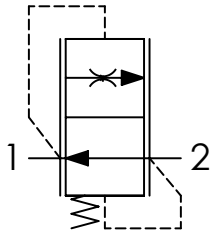


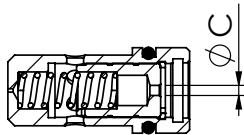


Schema idraulico - Hydraulic circuit



Dati tecnici - Technical data

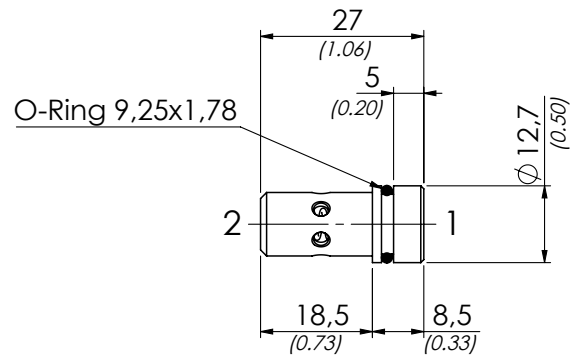
olio idraulico/Mineral oil	ISO 6743/4 (DIN 51524)	
Viscosità olio/Oil viscosity	15-250 mm ² /s (15 to 250 cSt)	
Classe di contaminazione max con filtro Max contamination index with filter	ISO 4406:1999 Classe 19/17/14	
Temperatura dell'olio/Oil temperature	-20°C +80°C	-4°F + 176°F
Temperatura ambiente/Ambient temperature	-20°C +50°C	-4°F + 122°F
È indispensabile l'utilizzo di un filtro per proteggere la valvola (filtrazione consigliata 15 µm) It is necessary a filter use to protect the valve (advised filtration 15 µm)		



Tipo Type	Ø C
VSCR61	1 (0.04)
VSCR62	1,2 (0.05)
VSCR63	1,5 (0.06)
VSCR64	1,7 (0.07)
VSCR65	1,9 (0.07)
VSCR66	2,1 (0.08)
VSCR67	2,3 (0.09)
VSCR68	2,4 (0.09)
VSCR69	2,7 (0.11)
VSCR610	2,8 (0.11)
VSCR611	3,1 (0.12)
VSCR612	3,3 (0.13)

01	02
Ordine	01
Ordering code	VSCR6

01	Valvole controllo discesa fisse compensate (Fixed flow control valves - pressure compensated)	VSCR6
	1 l/min (0.26 USgpm)	1
	2 l/min (0.53 USgpm)	2
	3 l/min (0.79 USgpm)	3
	4 l/min (1.06 USgpm)	4
	5 l/min (1.32 USgpm)	5
	6 l/min (1.58 USgpm)	6
02	Portata controllata a 100 bar ± 10% (Controlled flow at 100 bar ± 10%)	
	7 l/min (1.85 USgpm)	7
	8 l/min (2.11 USgpm)	8
	9 l/min (2.38 USgpm)	9
	10 l/min (2.64 USgpm)	10
	11 l/min (2.90 USgpm)	11
	12 l/min (3.17 USgpm)	12



mm
(Inches)

Tipo Type	Portata max Max flow l/min-USgpm	Pressione max Max pressure bar/PSI	Peso approssimativo Approx weight kg/lb
VSCR6	12 (3.20)	250 (3625)	0,012 (0.026)