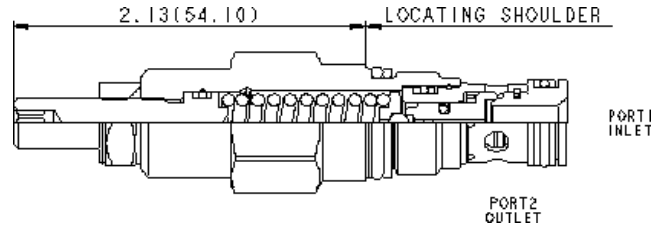
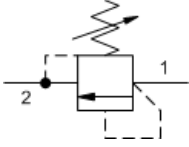


MODEL
RDBA-LAN

Direct-acting relief valve
CAPACITY: 12 gpm | **CAVITY:** T-162A



CONFIGURATION

L	Control	Standard Screw Adjustment
A	Adjustment Range	500 - 3000 psi (35 - 210 bar), 1000 psi (70 bar) Standard Setting
N	Seal Material	Buna-N
(none)	Material/Coating	Standard Material/Coating

Direct-acting relief cartridges are normally closed, pressure-limiting valves used to protect hydraulic components from pressure transients. When the pressure at the inlet (port 1) reaches the valve setting, the valve starts to open to tank (port 2), throttling flow to limit the pressure rise. These valves are smooth and quiet, essentially zero leak, dirt tolerant, immune to silting and are very fast.

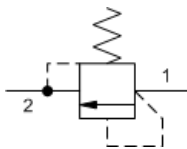
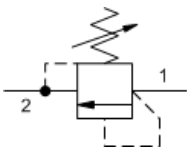
TECHNICAL DATA

Cavity	T-162A
Series	0
Capacity	12 gpm
Factory Pressure Settings Established at	4 gpm
Maximum Operating Pressure	5000 psi
Response Time - Typical	2 ms
Maximum Valve Leakage at Reseat	10 drops/min.
Reseat	>90% of setting
Adjustment - Number of Clockwise Turns to Increase Setting	5
Valve Hex Size	3/4 in.
Valve Installation Torque	20 - 25 lbf ft
Adjustment Screw Internal Hex Size	5/32 in.
Adjustment Locknut/Cap Hex Size	9/16 in.
Adjustment Nut Torque	80 - 90 lbf in.
Seal kit - Cartridge	Buna: 990-162-007
Seal kit - Cartridge	Polyurethane: 990-162-002
Seal kit - Cartridge	Viton: 990-162-006

NOTES

U.S. Patent #4,742,846; European Patent Pending

SYMBOLS

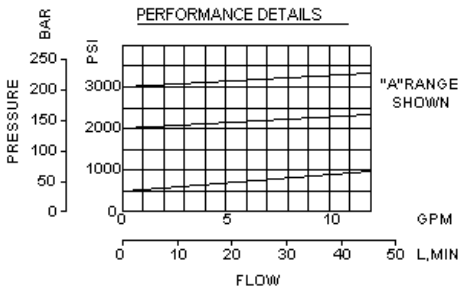


TECHNICAL FEATURES

- Will accept maximum pressure at port 2; suitable for use in cross port relief circuits.
- The seals on the adjust screw are exposed to system pressure which means this valve can only be adjusted when the pressure is removed. The setting procedure is; check the setting, remove the pressure, adjust the valve, check the new setting.
- Valve is relatively insensitive to varying oil temperatures and oil borne contamination.
- Select a spring range where the desired relief setting is approximately mid-range to high between the minimum and maximum pressure to ensure maximum valve repeatability.

- Suitable for use in load holding applications.
- Back pressure on the tank port (port 2) is directly additive to the valve setting at a 1:1 ratio.
- All 2-port relief cartridges (except pilot reliefs) are physically and functionally interchangeable (same flow path, same cavity for a given frame size).
- Incorporates the Sun floating style construction to minimize the possibility of internal parts binding due to excessive installation torque and/or cavity/cartridge machining variations.

PERFORMANCE CURVES



CONFIGURATION OPTIONS

CONTROL

Preferred Options	L	Standard Screw Adjustment
Standard Options	C	Tamper Resistant - Factory Set
	K	Handknob

ADJUSTMENT RANGE

Preferred Options	A	500 - 3000 psi (35 - 210 bar), 1000 psi (70 bar) Standard Setting
	W	800 - 4500 psi (55 - 315 bar), 1000 psi (70 bar) Standard Setting
Standard Options	B	300 - 1500 psi (20 - 105 bar), 1000 psi (70 bar) Standard Setting
	C	1000 - 6000 psi (70 - 420 bar), 1000 psi (70 bar) Standard Setting
	D	200 - 800 psi (14 - 55 bar), 400 psi (28 bar) Standard Setting
	E	150 - 400 psi (10 - 28 bar), 200 psi (14 bar) Standard Setting
	S	50 - 200 psi (3,5 - 14 bar), 100 psi (7 bar) Standard Setting

SEAL MATERIAL

Preferred Options	N	Buna-N
Standard Options	V	Viton

MATERIAL/COATING

Standard Options		Standard Material/Coating
	/AP	Stainless Steel, Passivated
	/LH	Mild Steel, Zinc-Nickel

Copyright © 2002-2014 Sun Hydraulics Corporation. All rights reserved.