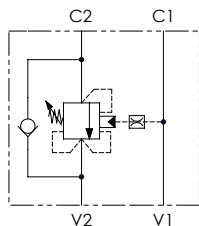
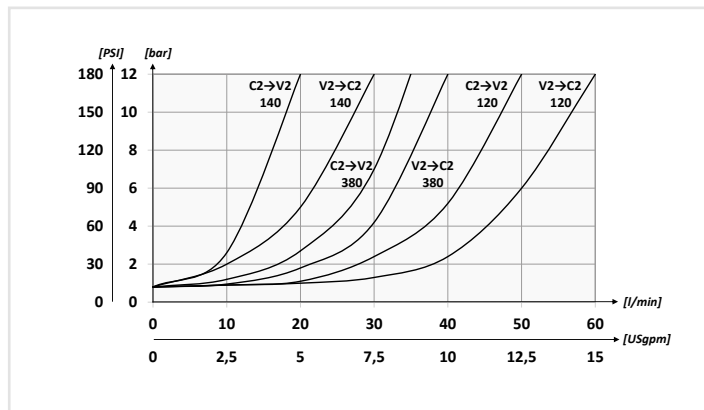


Schema idraulico - Hydraulic circuit



### Performances

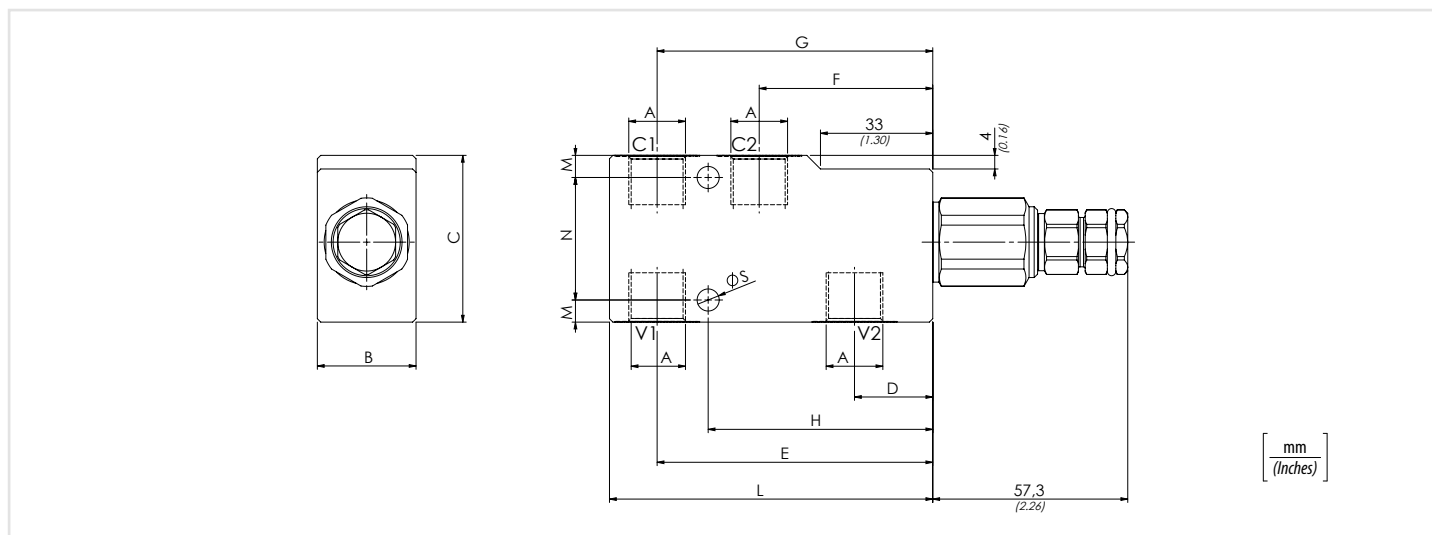


Codice ordinazione Ordering code	01	02	03	04	05
	<b>VCCL</b>			<b>S</b>	

<b>01</b>	Valvole di bilanciamento singole per centro chiuso (Single counterbalance valves for closed center)		<b>VCCL</b>
<b>02</b>	Dimensione (Size)	BSPP 1/4	<b>140</b>
		BSPP 3/8	<b>380</b>
		BSPP 1/2	<b>120</b>
<b>03</b>	Molla (Spring) <b>30/210 bar</b> (435/3045 PSI)	Rp 1:4.25	Incremento pressione al giro (Press. increase) <b>78 bar/al giro</b> (1131 PSI/turn)
		Rp 1:8.75	Incremento pressione al giro (Press. increase) <b>160 bar/al giro</b> (2320 PSI/turn)
	Molla (Spring) <b>60/350 bar</b> (870/5075 PSI)	Rp 1:4.25	Incremento pressione al giro (Press. increase) <b>135 bar/al giro</b> (1958 PSI/turn)
		Rp 1:8.75	Incremento pressione al giro (Press. increase) <b>160 bar/al giro</b> (2320 PSI/turn)
<b>04</b>	Materiale (Material)	Corpo in acciaio + zincatura (Steel body + zinc-plated)	<b>5</b>
<b>05</b>	Rapporto di pilotaggio (Pilot ratio)	1:4.25 Standard	/
		1:8.75	<b>8</b>

### Dati tecnici - Technical data

Oil idraulico/Mineral oil	ISO 6743/4 (DIN 51524)
Viscosità olio/Oil viscosity	15-250 mm <sup>2</sup> /s (15 to 250 cSt)
Classe di contaminazione max con filtro Max contamination index with filter	ISO 4406:1999 Classe 19/17/14
Temperatura dell'olio/Oil temperature	-20°C +80°C      -4°F +176°F
Temperatura ambiente/Ambient temperature	-20°C +50°C      -4°F +122°F
<b>È indispensabile l'utilizzo di un filtro per proteggere la valvola (filtrazione consigliata 15 µm)</b> It is necessary a filter use to protect the valve (advised filtration 15 µm)	



### Caratteristiche tecniche - Technical characteristics

Tipo Type	A	Portata max Max flow l/min-USgpm	Pressione max Max pressure bar/PSI	B	C	D	E	F	G	H	L	M	N	S	Peso approssimativo Approx weight kg/lb
<b>VCCL140</b>	<b>BSPP 1/4</b>	<b>30 (7.9)</b>	<b>350 (5075)</b>	<b>29 (1.14)</b>	<b>49 (1.93)</b>	<b>23 (0.91)</b>	<b>58 (2.28)</b>	<b>51 (2,01)</b>	<b>81 (3.19)</b>	<b>66 (2.60)</b>	<b>95 (3.74)</b>	<b>6,5 (0.26)</b>	<b>36 (1.42)</b>	<b>6,5 (0.26)</b>	<b>1,02 (2.24)</b>
<b>VCCL380</b>	<b>BSPP 3/8</b>	<b>40 (10.6)</b>													<b>0,98 (2.16)</b>
<b>VCCL120</b>	<b>BSPP 1/2</b>	<b>60 (15.9)</b>													<b>1,15 (2.53)</b>