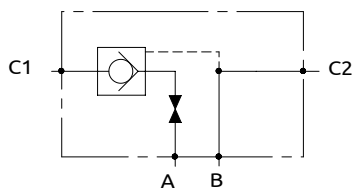
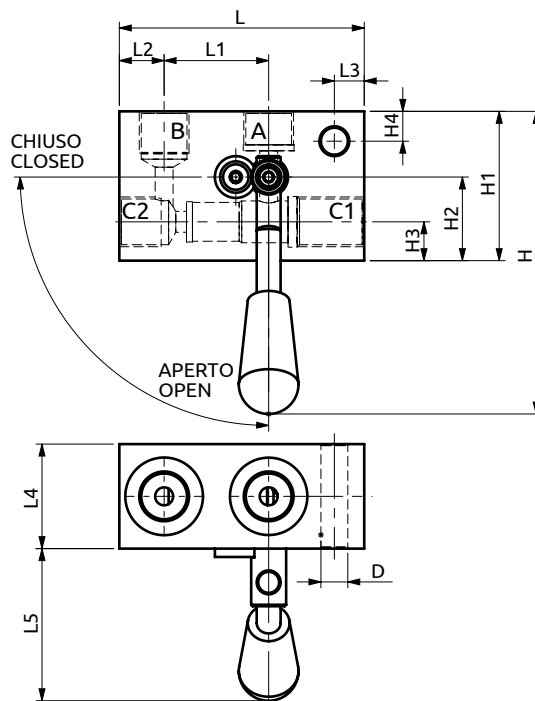
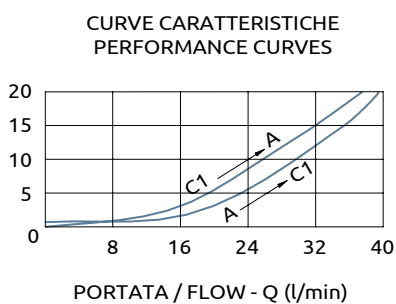




Valvola di blocco semplice pilotata sinistra (con rubinetto) Single pilot operated check valve with manual shut-off left



PRESSIONE / PRESSURE - Δp (bar)



Corpo in alluminio / Aluminium body

B050304.06.00	82	35	15	10	35	51	101	50	28	13	10	Ø9
COD.	L	L1	L2	L3	L4	L5	H	H1	H2	H3	H4	D



DESCRIZIONE

Permette il flusso libero da A verso C1. Idonea al sostentamento di un carico, non al controllo discesa.

DESCRIPTION

The valve allows free flow from A to C1. Suitable to hold a load not to control a load lowering.

Codice Ordinazione	Rapporto di Pilotaggio	Portata Massima	Pressione Max	Dimensione Porte	Peso
Ordering Code	Pilot Ratio	Max Flow	Max Pressure	Port Size	Weight
B050304.06.00	4.7:1	40 l/min	300 bar	3/8"G	0.4 kg