



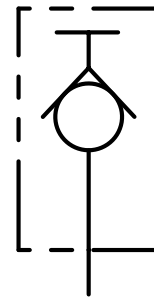
Codice ordinazione Ordering code	01	02
	<b>MNP</b>	

01	Miniprese prova pressione (Test couplings for pressure checking)	<b>MNP</b>	
02	Dimensione (Size)	BSPP 1/8	<b>180</b>
		BSPP 1/4	<b>140</b>
		BSPP 3/8	<b>380</b>
		BSPP 1/2	<b>120</b>

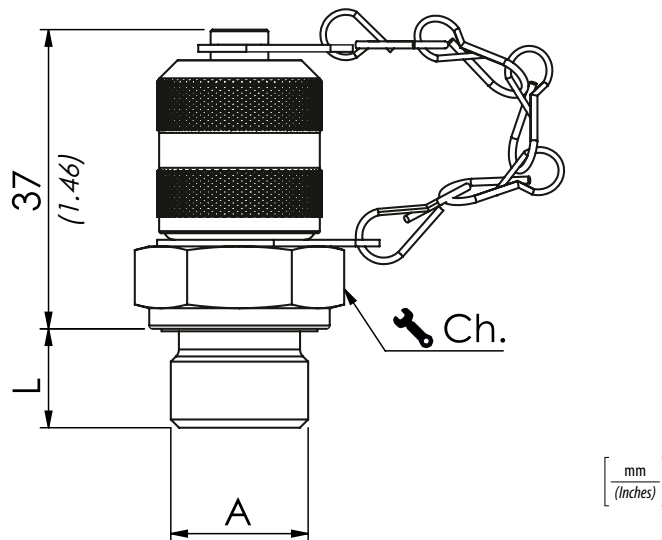
### Dati tecnici - Technical data

Olio idraulico/Mineral oil	ISO 6743/4 (DIN 51524)		
Viscosità olio/Oil viscosity	15-250 mm <sup>2</sup> /s (15 to 250 cSt)		
Classe di contaminazione max con filtro Max contamination index with filter	ISO 4406:1999 Classe 19/17/14		
Temperatura dell'olio/Oil temperature	-20°C +80°C	-4°F + 176°F	
Temperatura ambiente/Ambient temperature	-20°C +50°C	-4°F + 122°F	
È indispensabile l'utilizzo di un filtro per proteggere la valvola (filtrazione consigliata 15 µm) It is necessary a filter use to protect the valve (advised filtration 15 µm)			

### Schema idraulico - Hydraulic circuit



### Miniprese - Test couplings M16x2



### Caratteristiche tecniche - Technical characteristics

Tipo Type	A	Pressione max Max pressure bar/PSI	Ch. mm	L	Coppia di serraggio Tightening torque Nm/lbf ft	Peso approssimativo Approx weight kg/lb
<b>MNP180</b>	<b>BSPP 1/8</b>	<b>630 (9135)</b>	<b>17</b>	<b>8 (0.31)</b>	<b>20 (14.6)</b>	<b>0,07 (0.16)</b>
<b>MNP140</b>	<b>BSPP 1/4</b>		<b>19</b>	<b>12 (0.47)</b>	<b>30 (22)</b>	<b>0,08 (0.18)</b>
<b>MNP380</b>	<b>BSPP 3/8</b>		<b>22</b>	<b>12 (0.47)</b>	<b>60 (44)</b>	<b>0,10 (0.22)</b>
<b>MNP120</b>	<b>BSPP 1/2</b>		<b>27</b>	<b>14 (0.55)</b>	<b>80 (58.6)</b>	<b>0,13 (0.29)</b>